

Understanding the issues  
waste to energy  
Incineration



rubbish





DON'T TURN  
ROSETOWN  
INTO

INCINERATOR  
WILL HARM  
OUR FARM'S

WASTE  
OF  
ENERGY

GOD RECYCLES  
THE  
DEVIL BURN

DIOXINS  
KILL!

Regener  
NOT  
Inciner

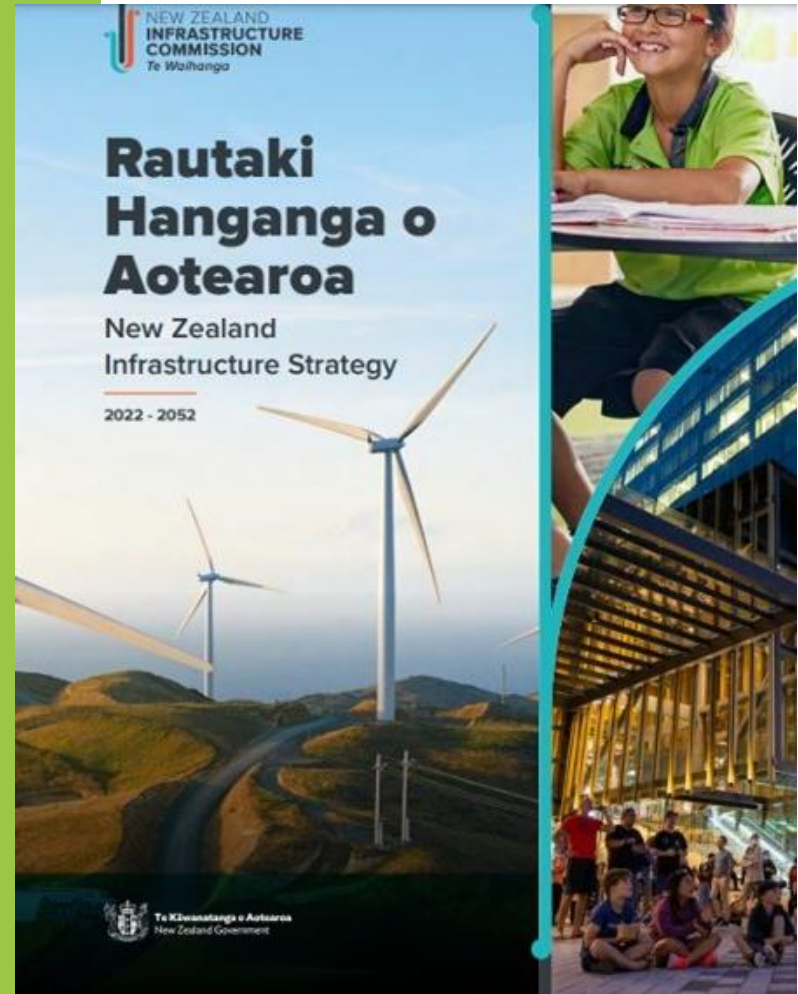
#BAN  
the  
BURN

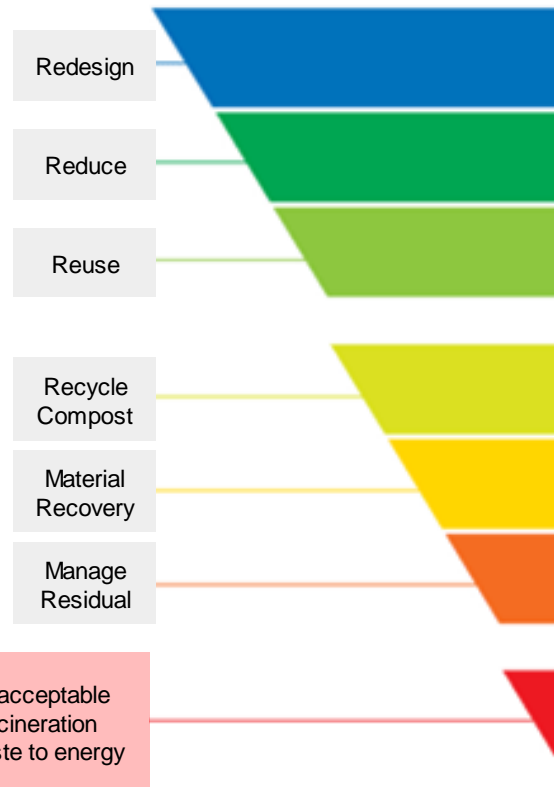
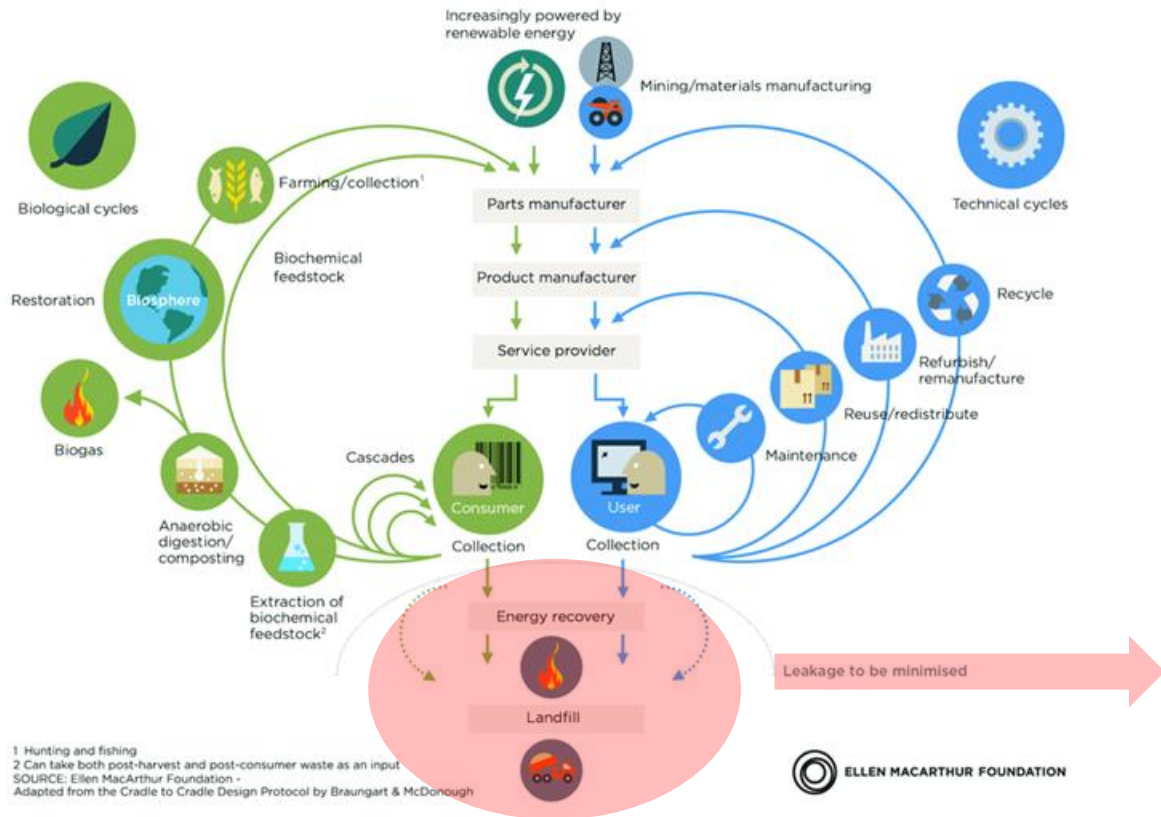
DON'T BURN

lays out the challenges  
and opportunities

- long list of jobs
- not much capex (or opex)
- limits to skilled workforce

so  
we have to manage demand  
and invest wisely





Para Kore supports the rapid transition to systems that are based on the well-being of people and planet

Durie said they could not afford to have another industry repeat the mistakes of the past



THE RECYCLING MYTH

# Denmark's 'devilish' waste dilemma

Its state-of-the-art trash incinerators are sending its climate ambitions up in smoke.



A waste-to-energy power plant operates in Copenhagen, one of many in Denmark | Image via iStock

## Municipal waste generated in 2019

(kg per person)



<sup>(1)</sup> Estimated

<sup>(2)</sup> Bulgaria, Ireland, United Kingdom: 2018 data

<sup>(3)</sup> Ireland: 2017 data



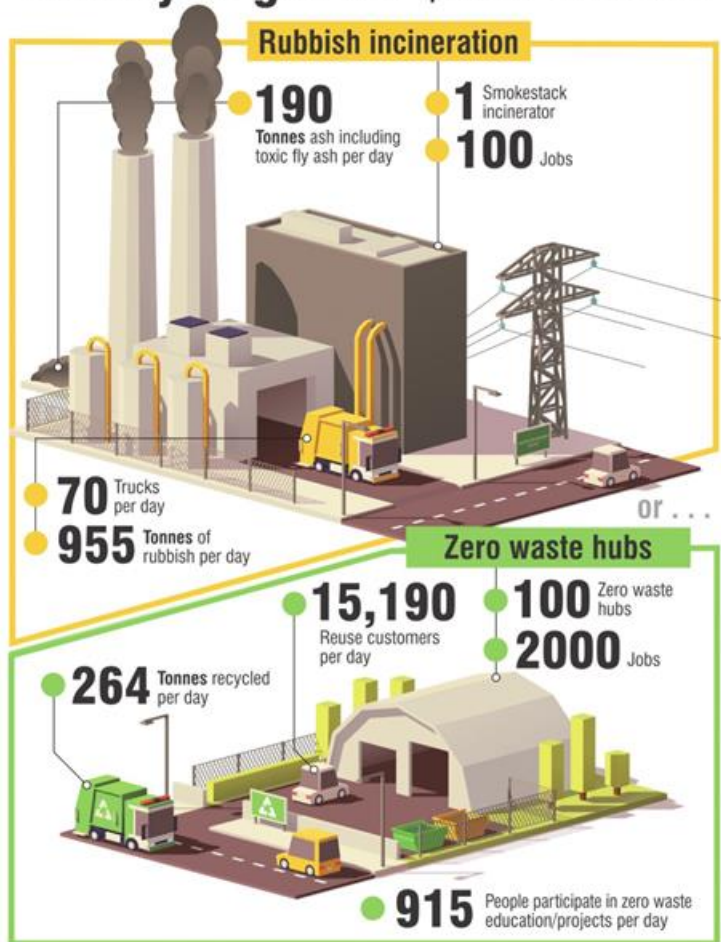
Long term cost for the community



CAPEX

OPEX

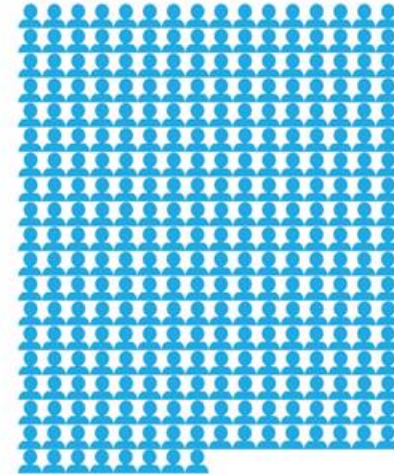
# What you get for \$350 million



## Jobs Created

(per 10,000 tonnes of waste products per year)

Reuse = 296



Recycling = 36



Landfilling = 6



Incineration = 1



Source: WREUSE in the UK summarizes the job numbers  
<http://www.wreuse.org/wp-content/uploads/2016/06/wreuse-2016-2.pdf>





**cheaper  
more effective  
renewable  
safer**

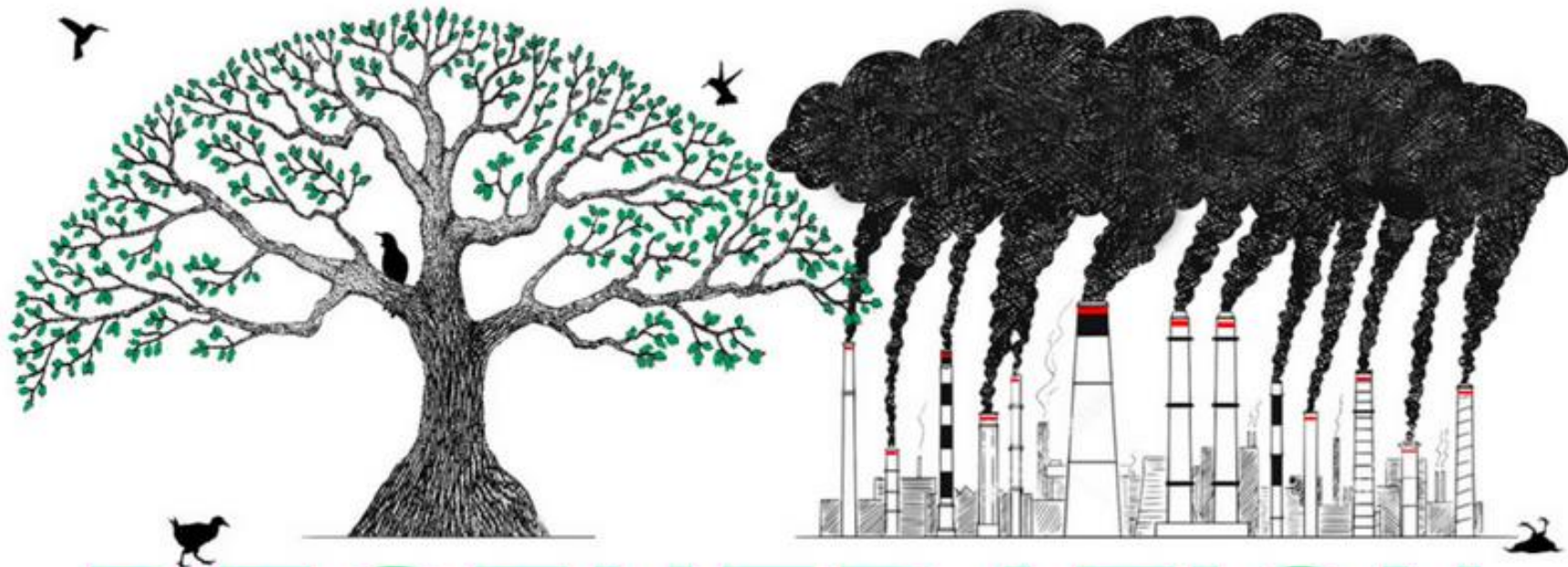


Biomonitoring data shows food  
across Europe is alarmingly polluted  
near waste (co)incinerators



**2023 Advice**  
on the direction of policy  
for the Government's second  
emissions reduction plan





**REGENERATION**  
**NOT INCINERATION**

