

RECONNECT PROJECT



www.selwyn.govt.nz

What we had...

Meat.....



... and three vege



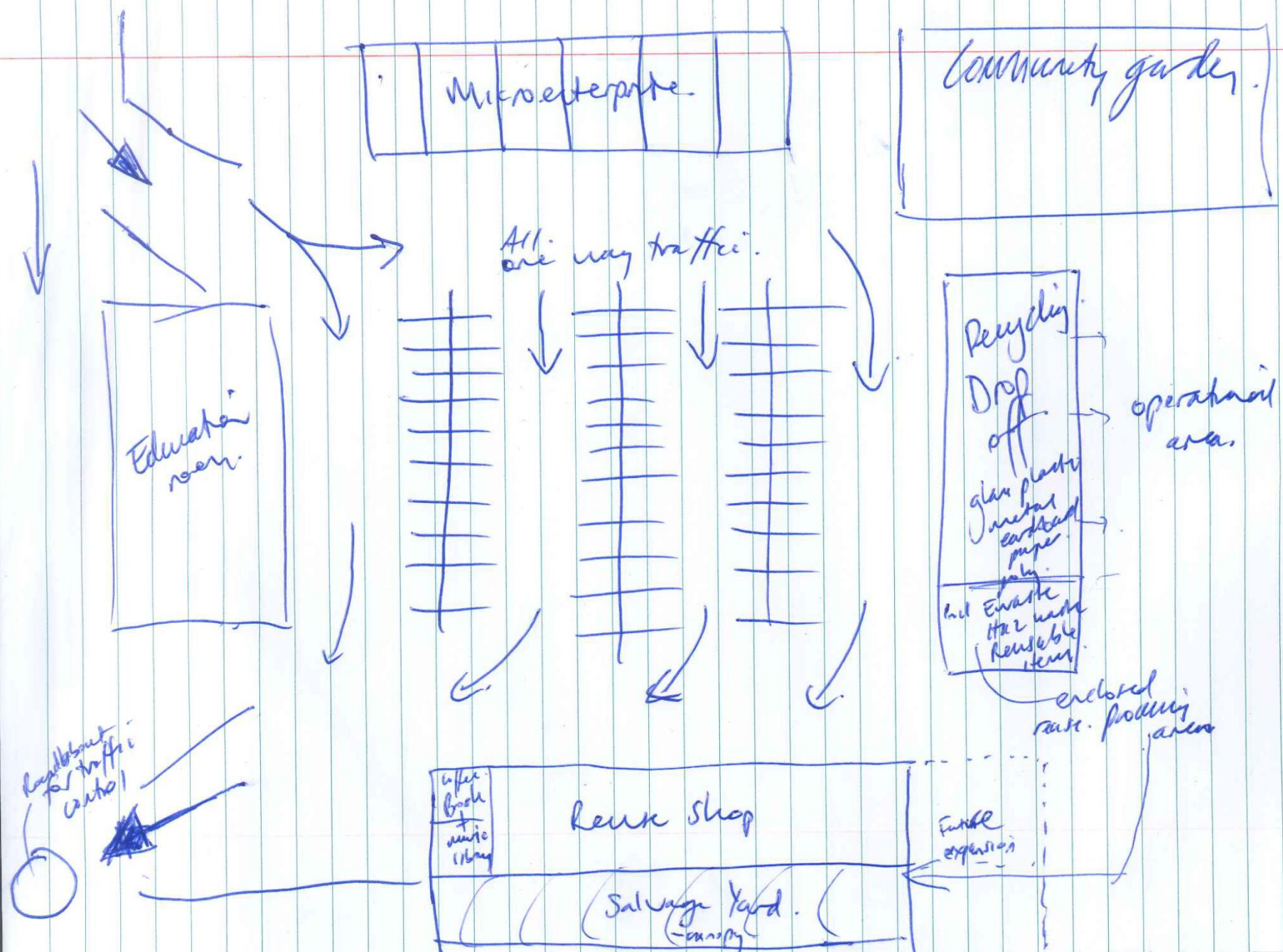


The Opportunity:
Space
Demand
Connection
Waste
Safety

= POTENTIAL

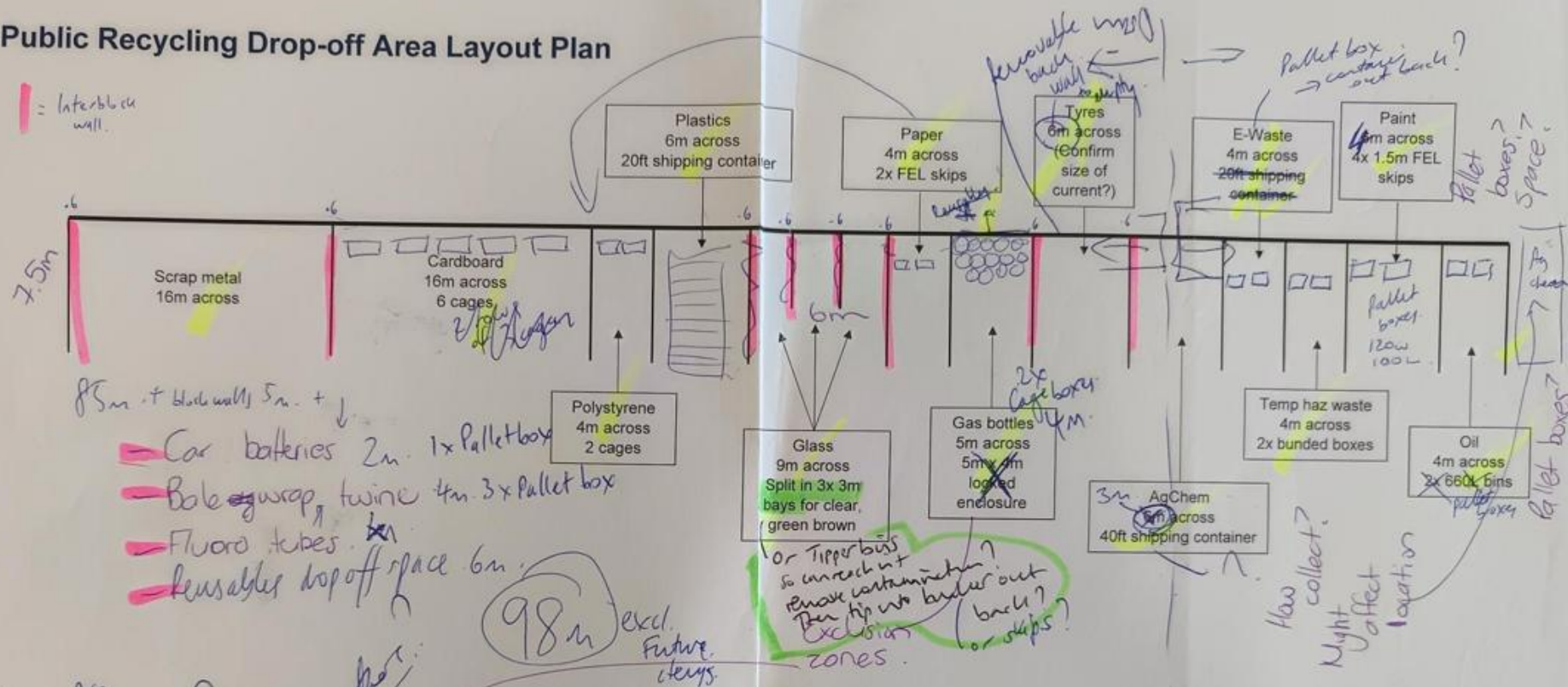
The word cloud visualizes the Waste Hierarchy, with the central and largest text being "Waste Hierarchy". Other prominent words include "ReUse", "ReCycle", "ReDiscover", "ReCreate", "Share Knowledge", "Build community", "A Hub", "Local!", "practical solutions", "common thread", "Place to connect", "A destination", "Upper tiers of Waste hierarchy", "Wasted resources", and "RePurpose". The words are arranged in a circular, spiral-like pattern, with the largest words in the center and smaller words towards the edges. The colors are primarily shades of orange, yellow, and brown, with some black text for emphasis.

The concept development



Conette May 2017

I = Interblock wall



* Carolyn
with
2000 volumes?
* Which stuff is
due to have together.

Small
temp
drop off
area.
To be transferred
to cage out
back.

Notes:

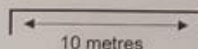
- Image is to scale
- No allowance made in this diagram for width of Interbloc walls 600mm
- Total linear metres = 90 (excl. Interbloc wall width) + 5m interbloc wall width
- Additional space for other potential future waste types not included

Things to consider:

- Tyre area still to be confirmed
- Tyres, AgChem, E-Waste, carseats: need to pay / fill out form. How will this be controlled? Near re-useables / salvageables drop-off area where it will be staffed?
- Distance to walk to drop-off varying types of materials 90m. Is this too far?
- Do re-useables, hazardous waste, oil, paint just get brought to staff member who puts on pallet behind them to be taken by staff to storage areas outside of public area?
- Move scrap metal to where processing bay is in current concept plan?

Do we have a 'U' shaped drop off?

- How we will mount syringe?



TOTAL AREAS

TOTAL DEVELOPMENT AREA INCLUDING LANDSCAPE SUPPLY YARDS

APPROX 15,000 M2

* EXCLUDES ALL EXISTING ROADS

KEY			
	LAWN AREA		TREES / SHELTER BELTS
	GARDEN BEDS		COMMUNITY GARDEN PLOTS
	TRAFFIC FLOW		
	FENCE & GATE		

GENERAL NOTES

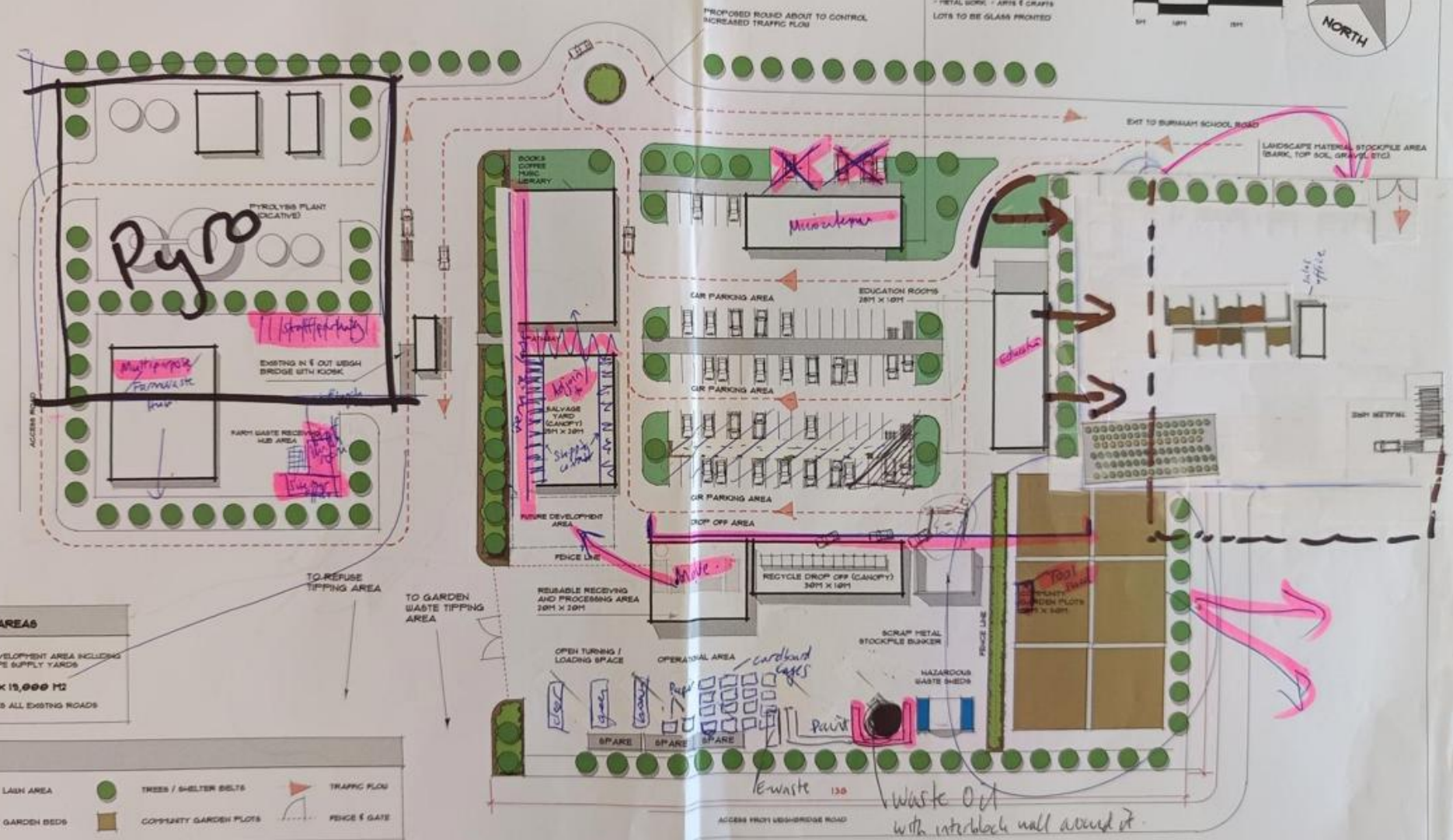
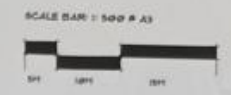
PLAN IS CONCEPTUAL ONLY AND WILL BE SUBJECT TO CHANGES TO SATISFY RESOURCE CONSENT REQUIREMENTS

MEASUREMENTS AND DIMENSIONS ARE INDICATIVE AND SUBJECT TO FURTHER REVISION

PRELIMINARY CONCEPT PLAN **SELWYN DISTRICT COUNCIL REFUSE STATION DEVELOPMENT**

PROPOSED CENTREPIECE 10M X 5M X 5 LOTS

- WOOD WORK - FARMING / BERRIES
- METAL WORK - ARTS & CRAFTS
- LOTS TO BE GRASS FRONTED



DATE	18 OCTOBER 2011
DRAWN BY	D. GREGG
REVISION	4
PAGE	1 OF 1





PRELIMINARY CONCEPT PLAN

SELWYN DISTRICT COUNCIL REFUSE STATION DEVELOPMENT

SCALE: 1:1500 DATE: SEPTEMBER 2015



Psychological warfare



Recycle & Reuse Drop-off and Parking



- Canopy rain protection
- Space and flexibility!
- Staffed area
- Reusable item drop-off
- Safety
- Large carpark

Recycle & Reuse Drop-off and Parking



- Plastifelt asphalt
 - 16,000L waste engine oil
 - 11,000 4litre plastic engine oil containers
 - 473 tonnes of old asphalt incorporated
- 8,000kg of bottle glass in footpath
- Solar carpark floodlights
- Raingarden stormwater treatment

ReDiscover



- Relocated old classroom blocks
- Refurbished with second hand and salvaged fittings
- Where new, we chose sustainable
- Full time onsite educator



ReDiscover



Repair cafes

ReNourish Community Garden



- Compost demonstrations
- Food bank
- Gardening and horticultural skills
- Rehabilitation
- Accessible
- Connection and relationships



ons

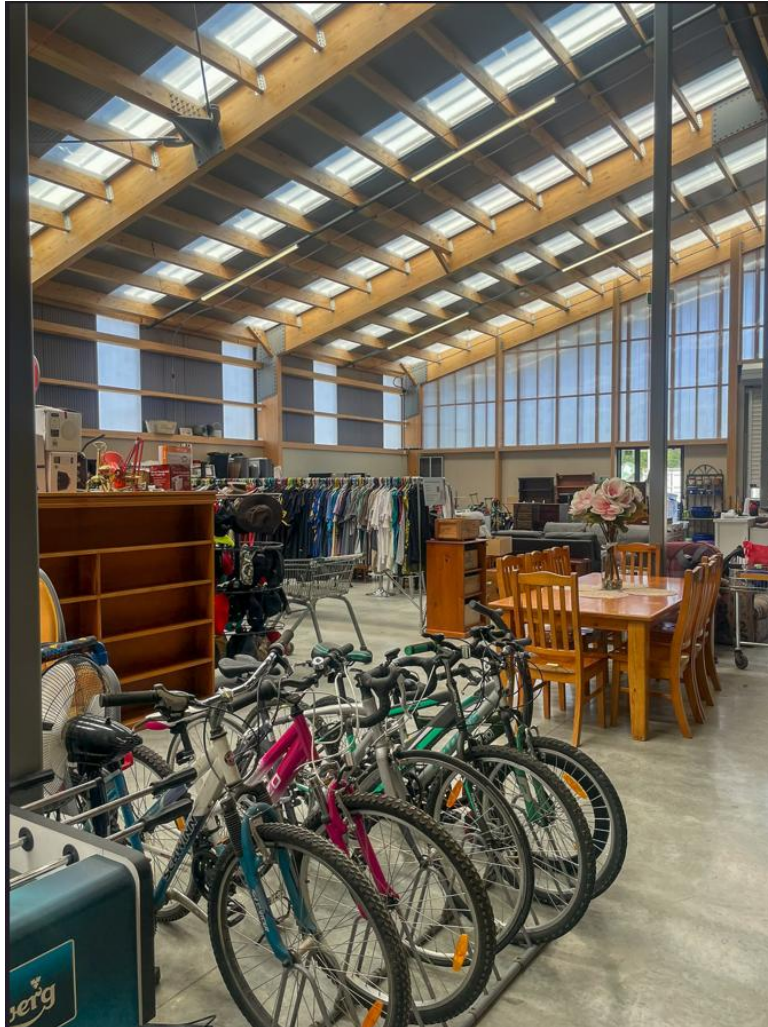
Re-use Shop & Salvage Yard



Re-use Shop & Salvage Yard



Re-use Shop



What's next....?

Construction waste sorting



- Diversion to shop or recycle markets
- Tonnes per day per person to break even

Tool Library



ReCreate - Maker Spaces



- Upcycling, repair, refurbish
- Sharing of knowledge and skills – woodwork, fabrics, metalwork, art
- Night classes
- Business sponsorship
- Department of Corrections, Youth Justice Facility
- Men's Shed
- Social connections

Landscape Supplies Yard



- Externally operated
- Sale of our compost as well as aggregates and mulches
- Trailer hire
- Synergy with Recovery Park
- Employment

Multi-Waste & Recycling Hub



- Deconstruction: E-waste, child car seat, mattress dismantling, other?
- Timber de-nailing
- Farm waste and recycling consolidation?
- Future recoverable material expansion
- Employment, rehabilitation





Things that worked well & lessons learnt

WORKED WELL

- Involving the onsite manager
- Cutting and pasting old school style
- Go big – it will always be too small, and keep it flexible so you can adapt
- Early Contractor Involvement

LESSONS LEARNT

- Engineers & architects will always stick to what they are comfortable with – challenge them – why can't this be timber? Does this need to be concrete? But be pragmatic (not too purist)
- Stick to your guns and trust your gut. Ask “dumb questions” if you don't understand something
- Do your own research and know what you want
- Don't get put off by the high level QS cost estimates (Canopy \$1.4M est vs \$300k actual)
- The 4am thoughts can be the best ones!