



The CRUNCH Programme



June 2025

WasteMINZ Conference



Presented by

Amanda Robinson

Lightfoot

Emma Brockie

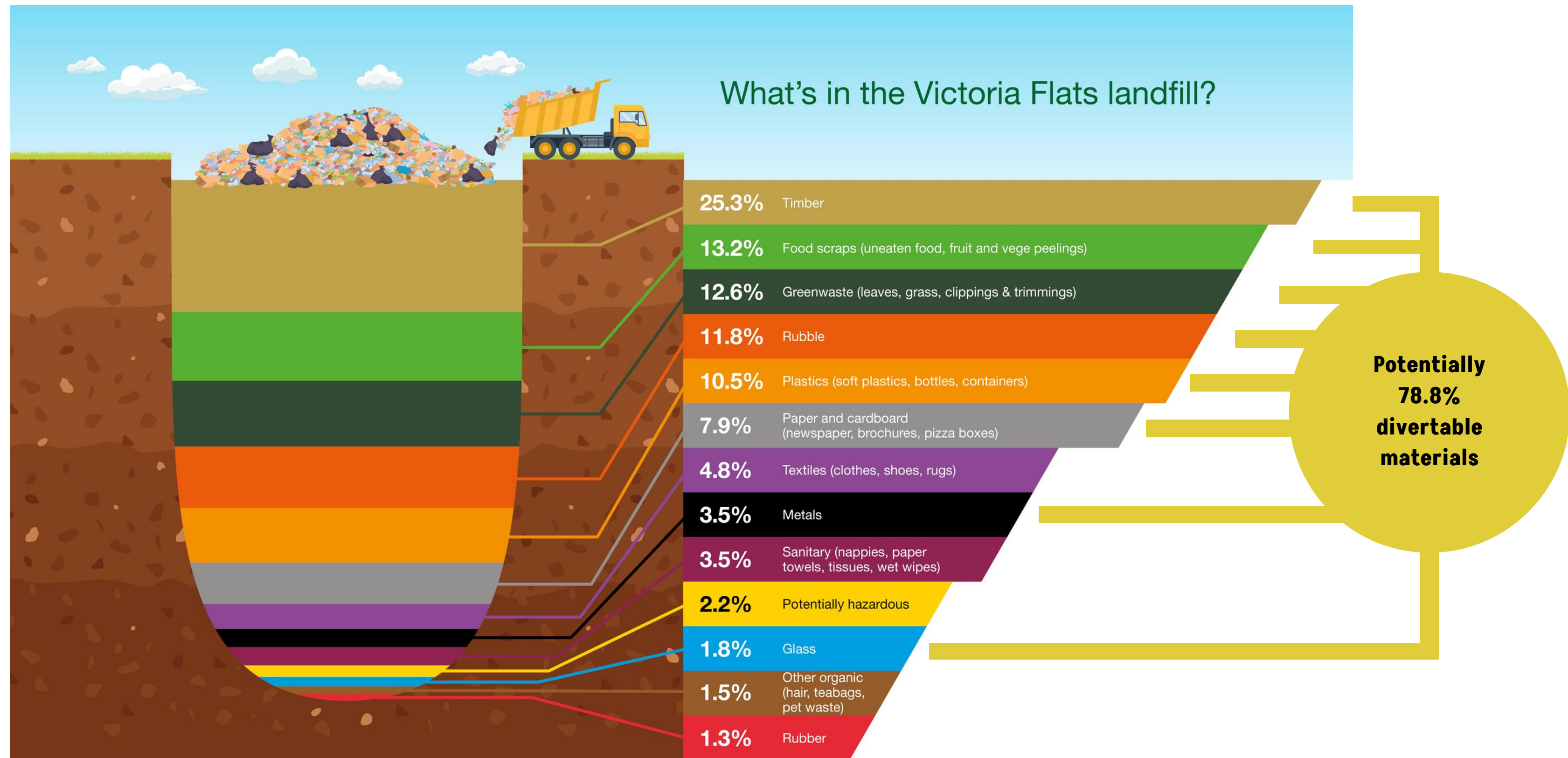
Queenstown Lakes

District Council



OneBike Hub

Each year, thousands of bikes and tonnes of metal bike parts are discarded in Aotearoa, contributing to unnecessary landfill waste.





The Crunch Programme

The Crunch Programme, led by Lightfoot in collaboration with the QLDC and industry partners, is pioneering New Zealand's first bike metal waste-reduction initiative. By rescuing, repurposing, and recycling metal bike components, we have designed a circular solution for problem waste.



Project Operation



Project Operation

By rescuing, repurposing, and recycling metal bike components, we have designed a circular solution for problem waste. The Crunch programme emphasises how cross-sector collaboration can tackle niche waste streams, engage communities, and shift industry mindsets—proving that many hands truly make light work.

The Waste Hierachy











What we do

Bike maintenance workshops and services to keep bikes in circulation for longer and changing mindsets (reduce)

Collecting bikes that were otherwise destined for landfill, fixing, and donating to the community (reuse, recycle)

Using the parts to repair or build ‘new’ bikes (reuse)

Recovering metals and other materials (recover)

		
Bike maintenance workshops and services to keep bikes in circulation for longer and changing mindsets (reduce)		
Collecting bikes that were otherwise destined for landfill, fixing, and donating to the community (reuse, recycle)		
Using the parts to repair or build ‘new’ bikes (reuse)		
Recovering metals and other materials (recover)		



Questions?



 lightfoot.org.nz

 [@lightfootinitiative](https://www.facebook.com/lightfootinitiative)

 amanda@lightfoot.org.nz

 emma.brockie@qldc.govt.nz

June 2025

WasteMINZ Conference

