


Building construction's sustainability toolbox

3R Group + Mitre 10





More than half of what ends up in landfill across Aotearoa comes from the construction and demolition industry – we all know it's a big problem!



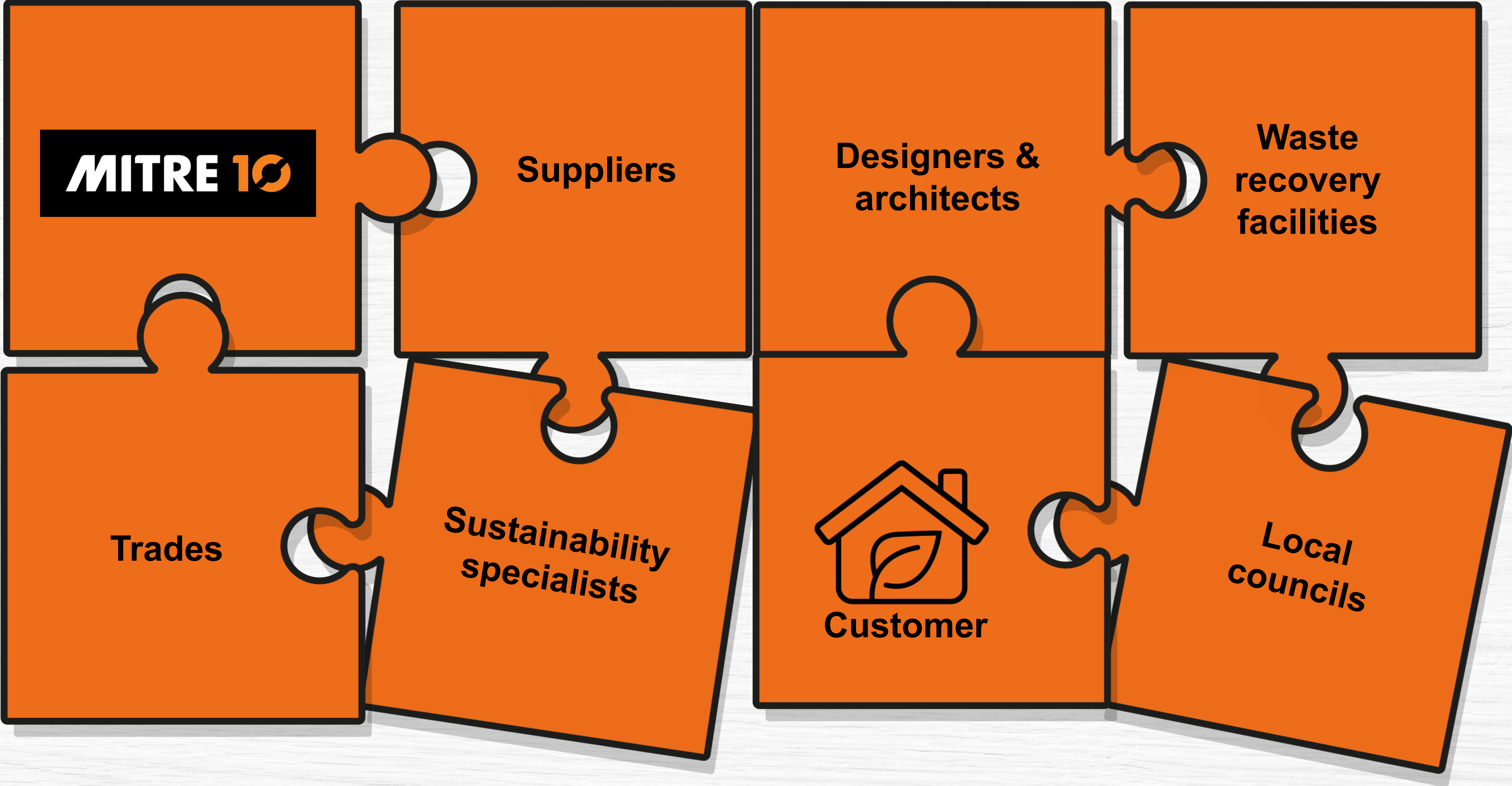



**We need to change
behaviour on building
sites across the
country.**

How do we do that?



Collaboration is key



A photograph of two construction workers, a man and a woman, standing on a dirt construction site. They are both wearing orange safety vests and hard hats. The woman is holding a set of blueprints, and the man is holding a tablet. In the background, there is a large building under construction with its wooden frame visible. The sky is blue with some clouds.

**So, we all want to
educate builders about
how to make more
sustainable decisions.**

**But builders don't talk
like we do. So how do
we get them to listen?**





Having practical, easy to implement solutions is vital - if it's harder than what they're currently doing, they ain't gonna change



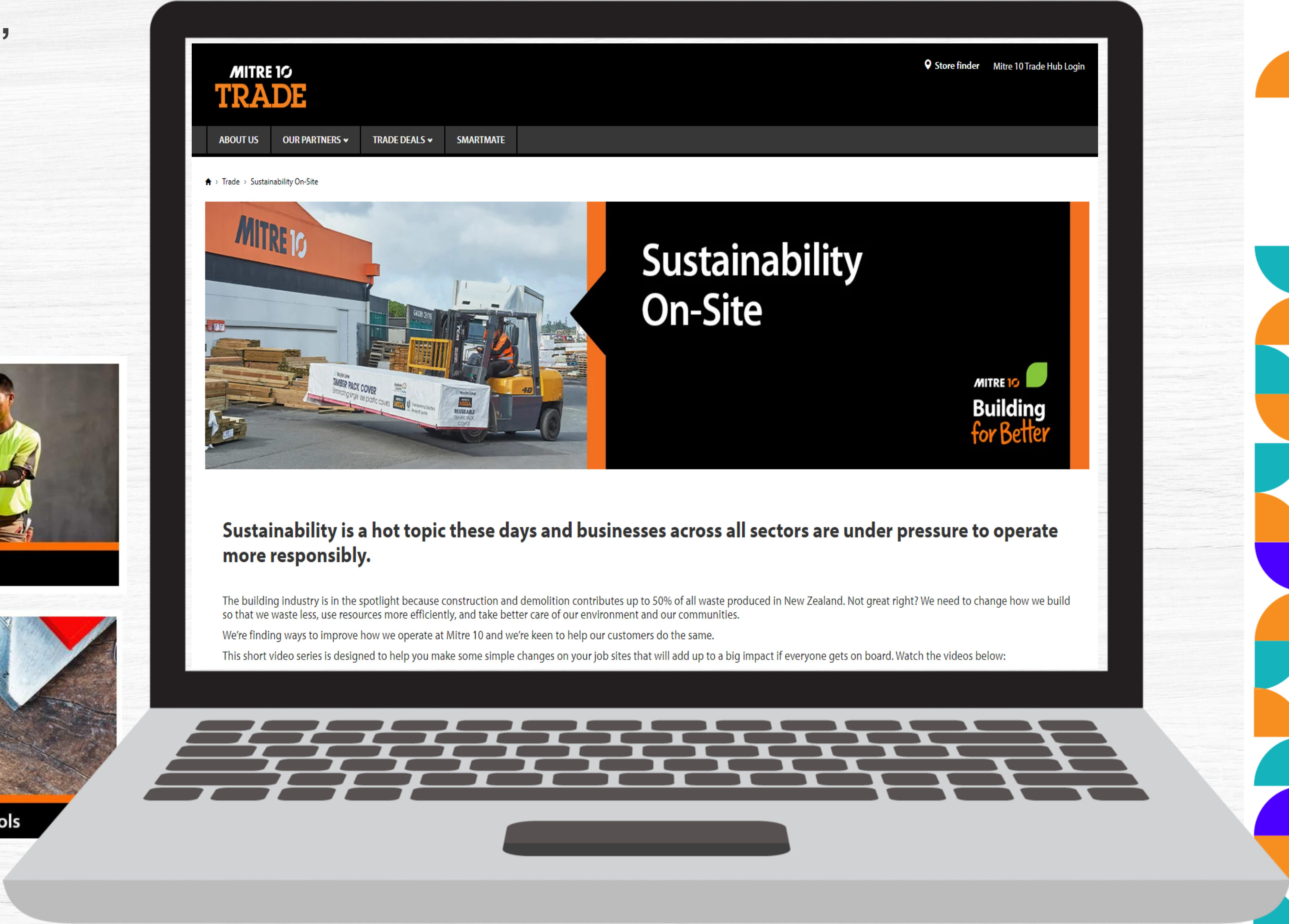


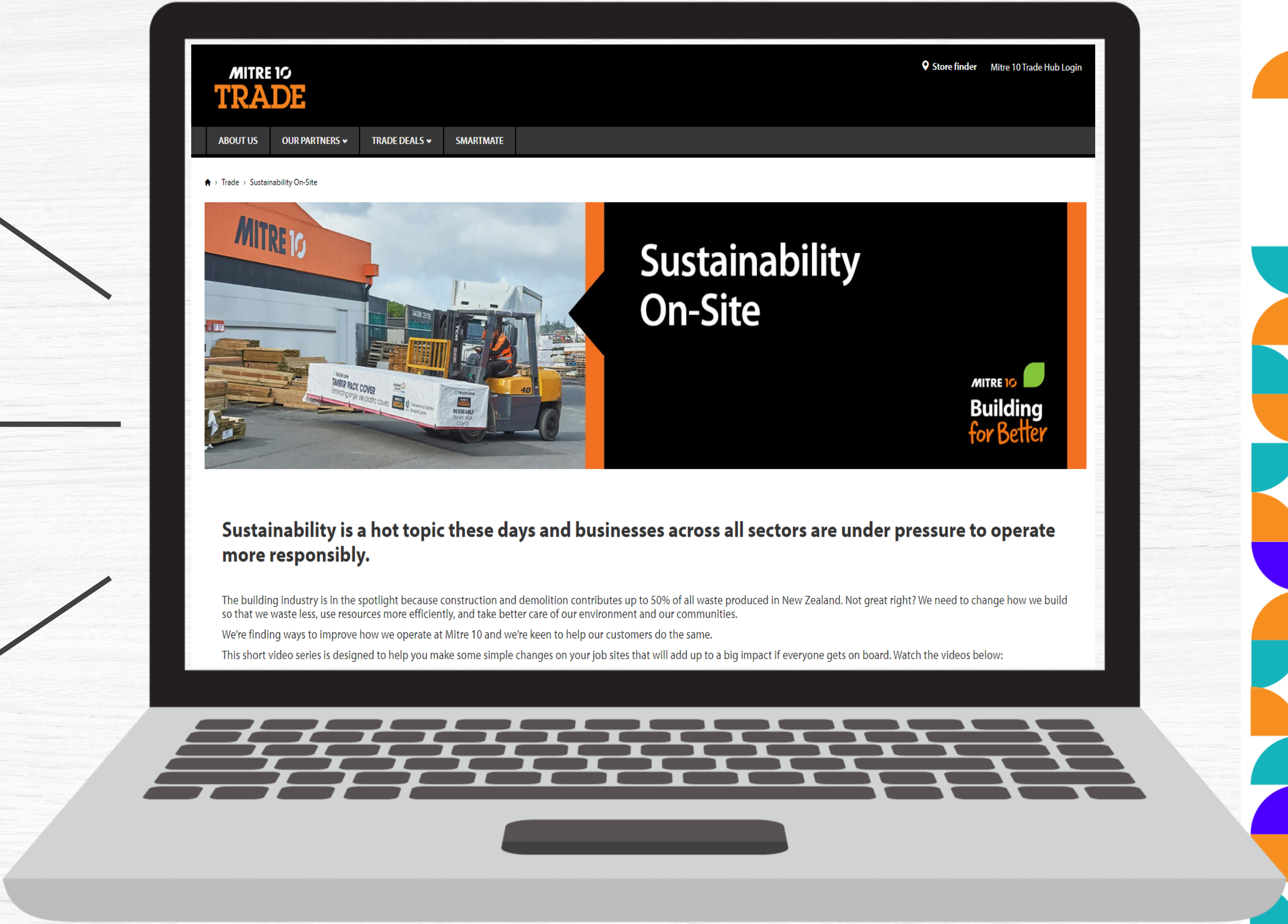
Ensure staff on the ground are also trained, so they are empowered to continue talking sustainability with their customers



We also created an online portal, which is:

- Trade-pitched
- Easy to digest
- Relevant
- Clear

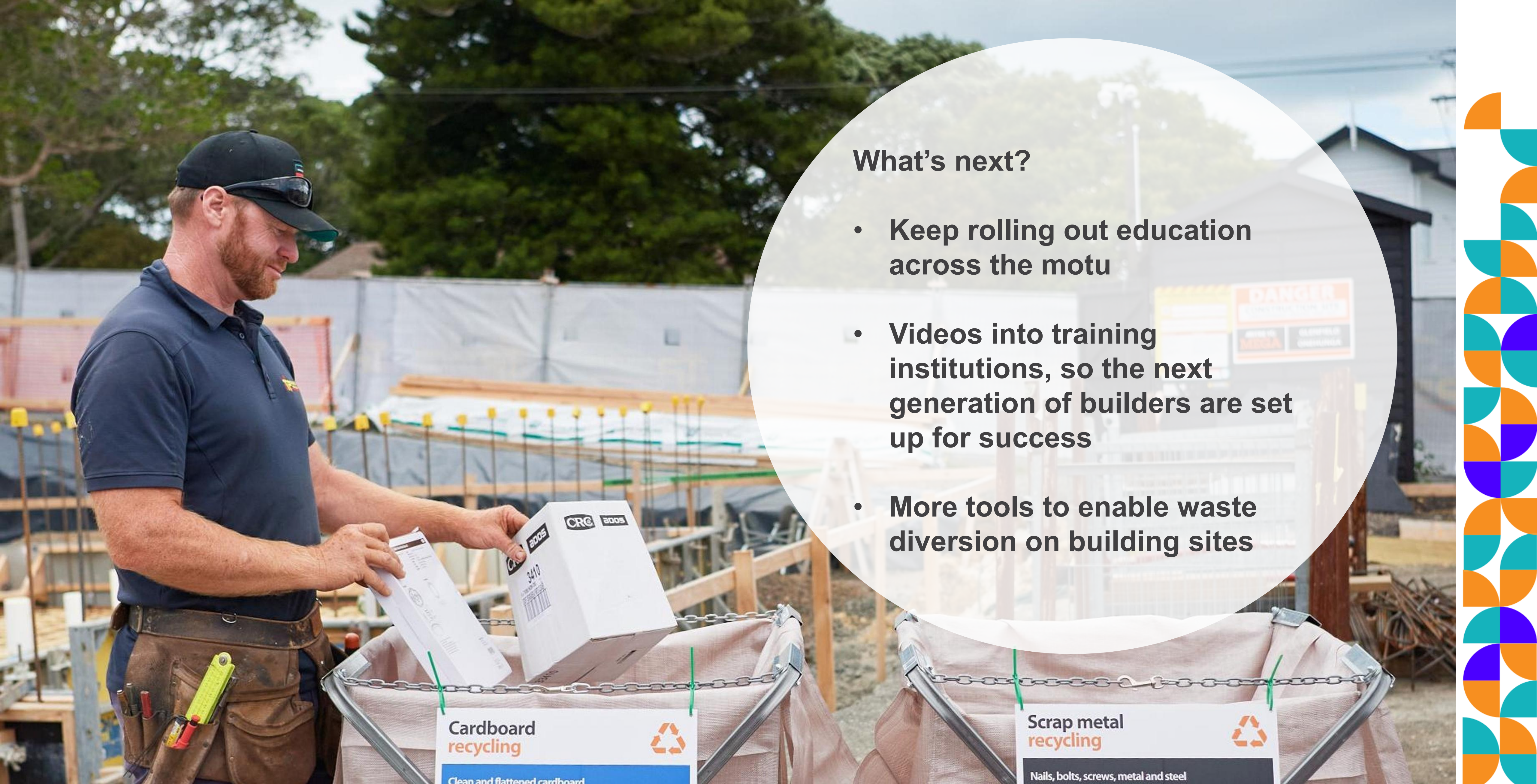






How to sort waste on your building site






What's next?

- Keep rolling out education across the motu
- Videos into training institutions, so the next generation of builders are set up for success
- More tools to enable waste diversion on building sites



A photograph of a construction site at dusk or dawn. In the foreground, two women wearing white hard hats and high-visibility vests (one yellow, one orange) are looking towards a group of three men in the middle ground. The men are also wearing hard hats and safety vests, and are engaged in conversation. In the background, there is a white pickup truck with 'HH' on its side, and the skeletal structure of a large building under construction. A semi-transparent white circle containing text is overlaid on the right side of the image.

We need your help! It will take all of us to keep building momentum – finding new outflows, designing out waste etc. Me mahi tahi tātou!



Ngā mihi nunui

reimagining a world
without waste