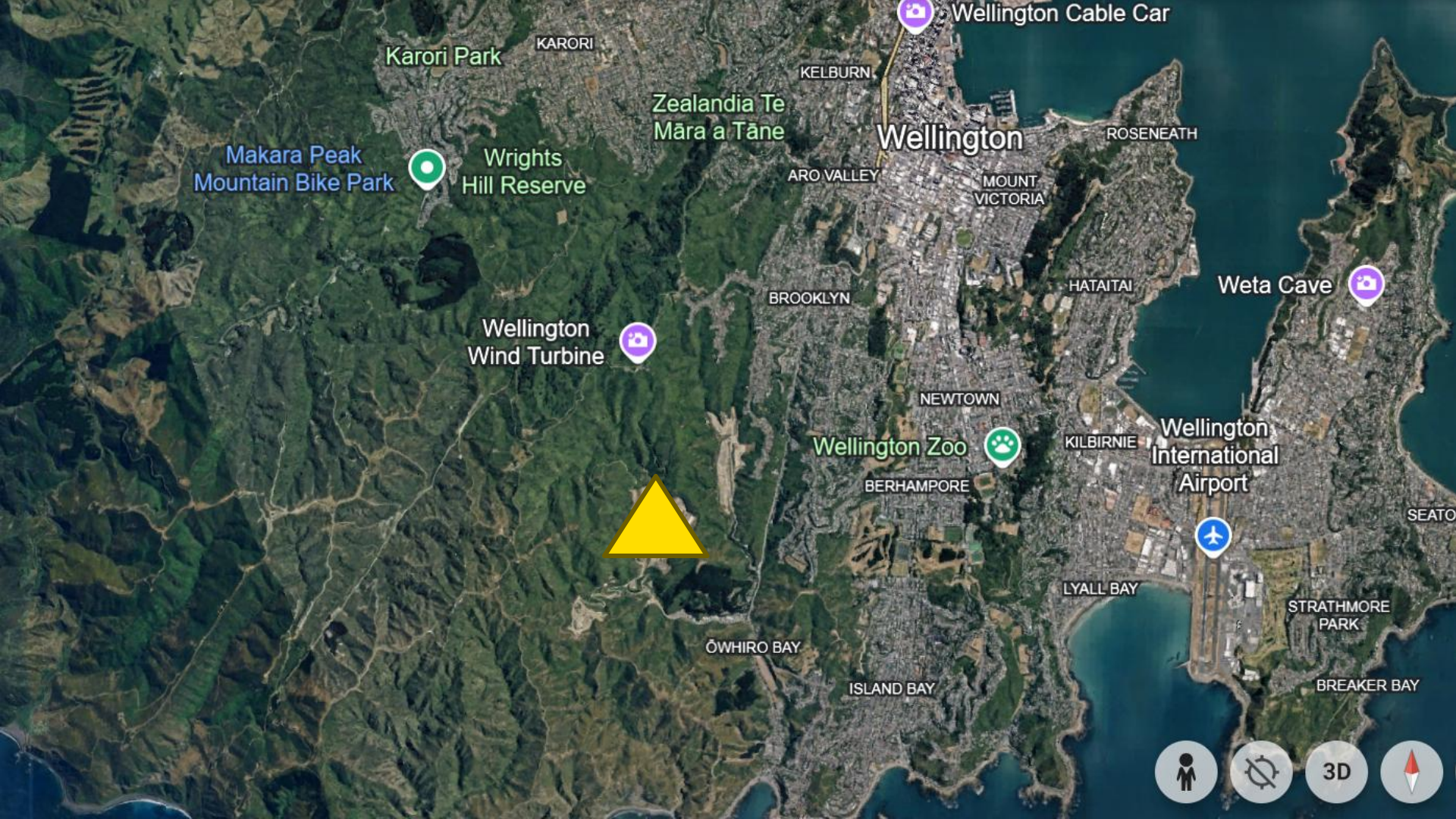


Transforming Adversaries into Allies:

The journey of a city landfill project from vision to reality

Jenny Elliott, Manager, Waste Operations,
Darren Hoskins, Manager, Landfills Operations





Karori Park

KARORI

KELBURN

Zealandia Te
Māra a Tāne

Wellington

ROSENEATH

Makara Peak
Mountain Bike Park

Wrights
Hill Reserve

ARO VALLEY

MOUNT
VICTORIA

BROOKLYN

HATAITAI

Wellington
Wind Turbine

Wellington Zoo

NEWTOWN

Wellington
International
Airport

KILBIRNIE

BERHAMPORE

LYALL BAY

ŌWHIRO BAY

ISLAND BAY

STRATHMORE
PARK

BREAKER BAY

SEATO

What's the issue?

June 2026:

- Landfill capacity and consents expire
- Need a solution for residual waste by this date





Capital Trout Centre

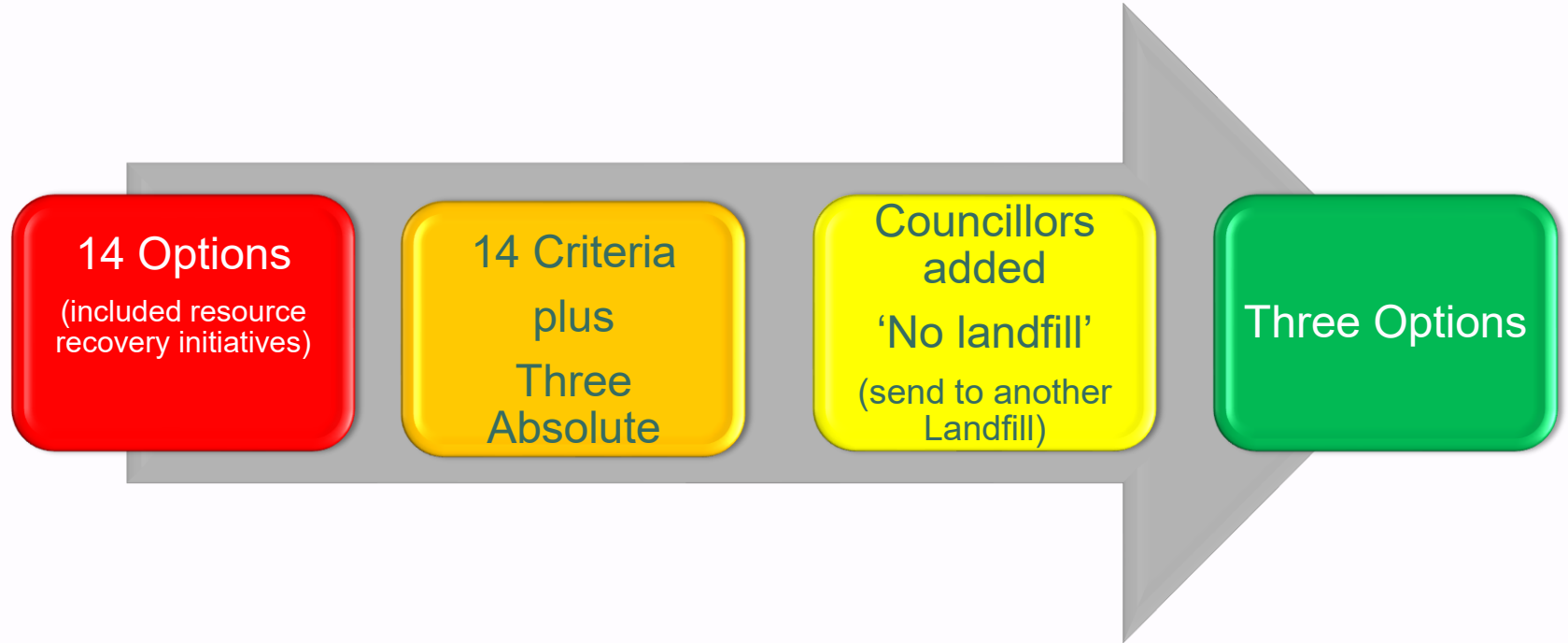
Capital Montesson
Preschool

City to Sea Walkway
at Quebec street

KINGSTON

MORNI

Selecting a preferred option – Multi Criteria Analysis



Criteria



Te Ao Māori alignment

1. Input from mana whenua for all criteria and Te Ao Maori alignment is still ongoing

Impact

2. Emission Levels
3. Environmental effects (waste, land and air)


Planning

4. Level of consent and planning risk
5. Size - ability to fit on existing site
6. Scalability (to support waste minimisation), 
7. Timeframe for the solution 

Community

8. Local community effects
9. Community connection
10. Resilience in cases of emergency

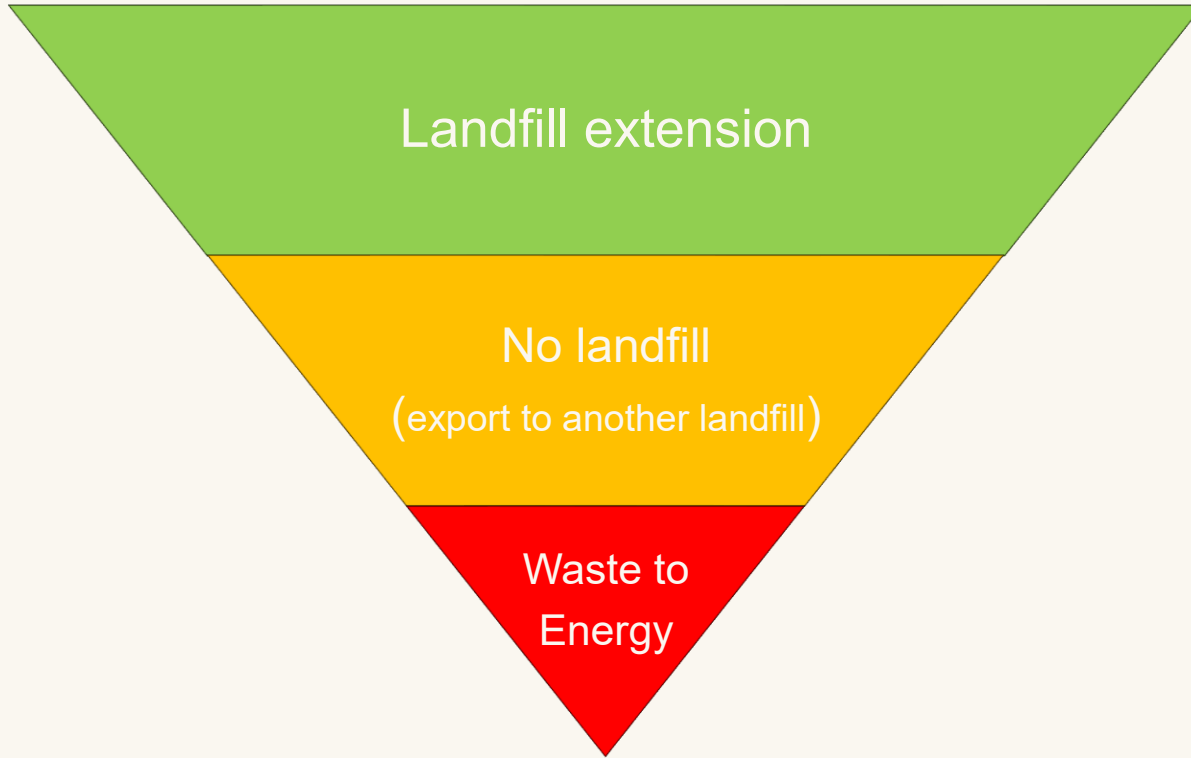
Technical

11. Technical maturity
12. Robustness/reliability of solution 

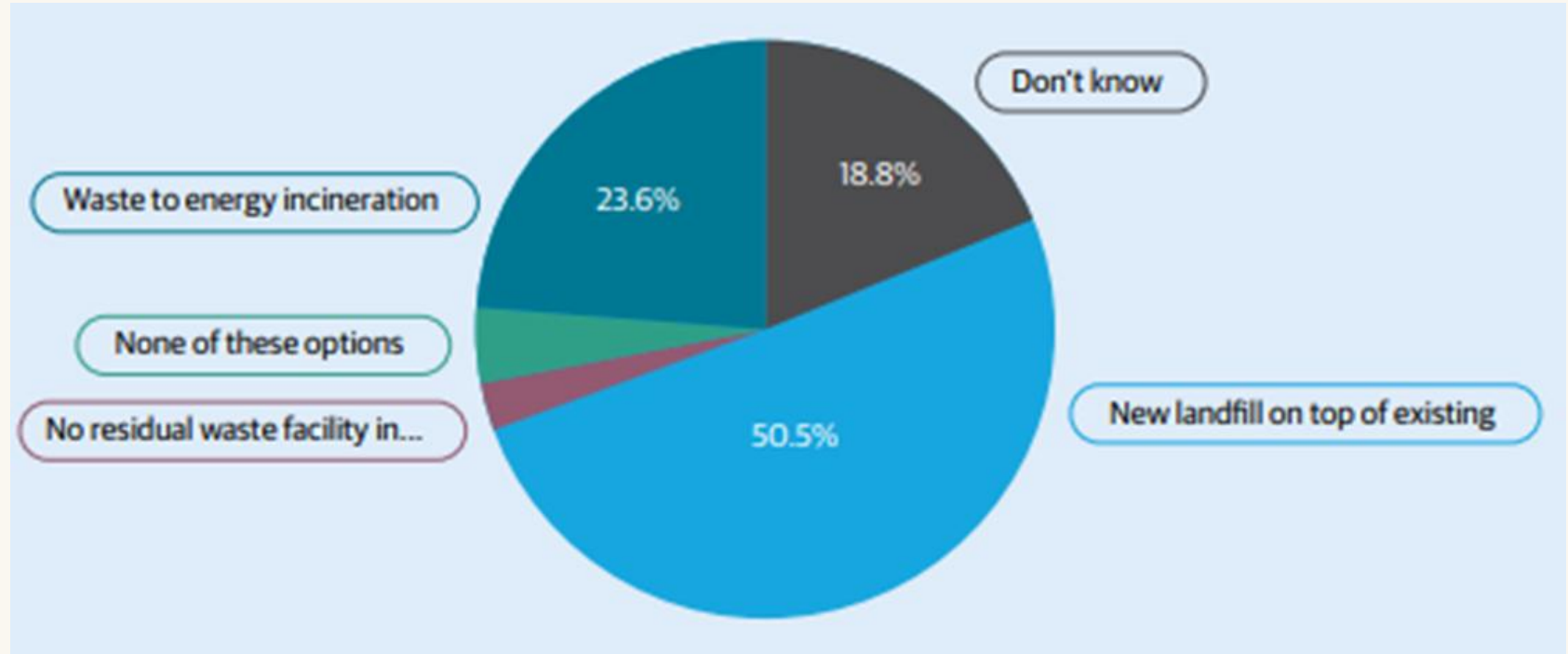
Financial

13. Support for a circular economy
14. Value for money

How the options stacked up



Annual Plan Public Consultation - outcome

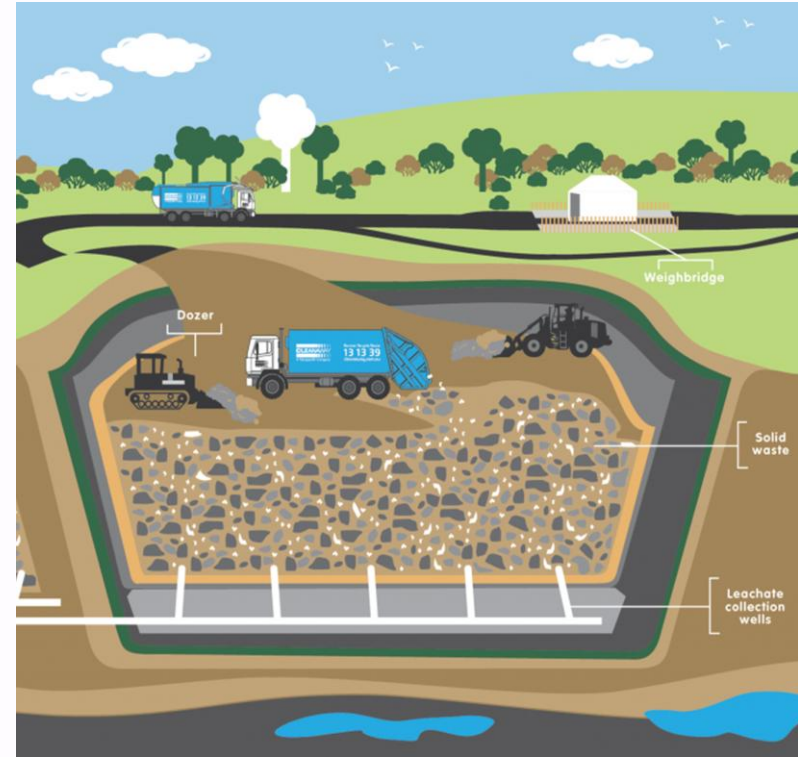


Timeline



Sludge

- 15,000 tonnes per year
- Mixed 1:4 with waste
- New Moa Point Sludge Minimisation Facility
- **Enables resource recovery!**





MORNING

KINGSTON

Capital Montesson
Preschool

City to Sea Walkway
at Quebec street

Capital Trout Centre

Construction



Clearing the blockage



Our approach to stakeholder engagement





Key learnings

- Create a safe place for authentic dialogue
- Build trust through openness and transparency
- Understand and appreciate each parties needs



Thank you