

# Samples to strategy: Navigating research and an early career in a post-COVID world

Gina Harris  
Environmental Consultant  
ERIAS

# TYPICAL PATHWAY



Academic learning &

Technical training

New job &

Mentoring

Career navigation



# TYPICAL PATHWAY?

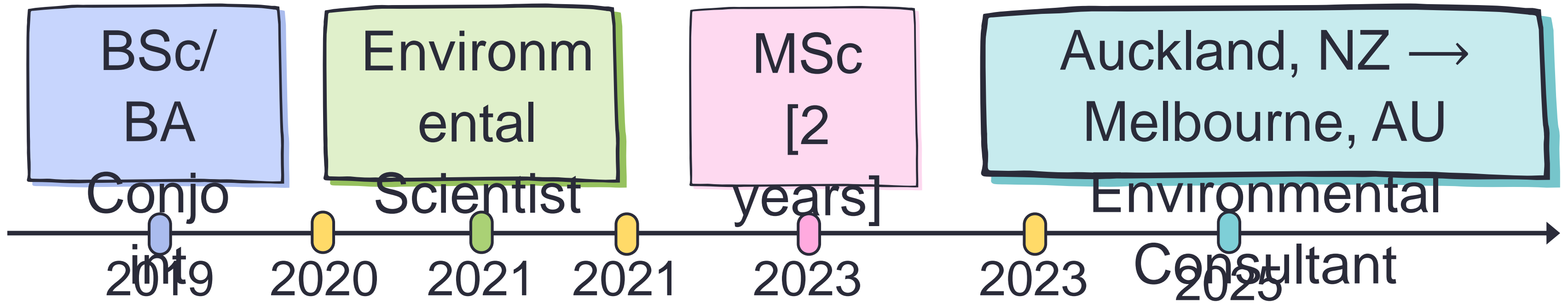
Academic  
learning  
&  
Technical  
training

New  
job  
&  
Mentori  
ng

Career  
navigat  
ion

COVID-19 = Evolution in early  
career pathways

# MY PATHWAY

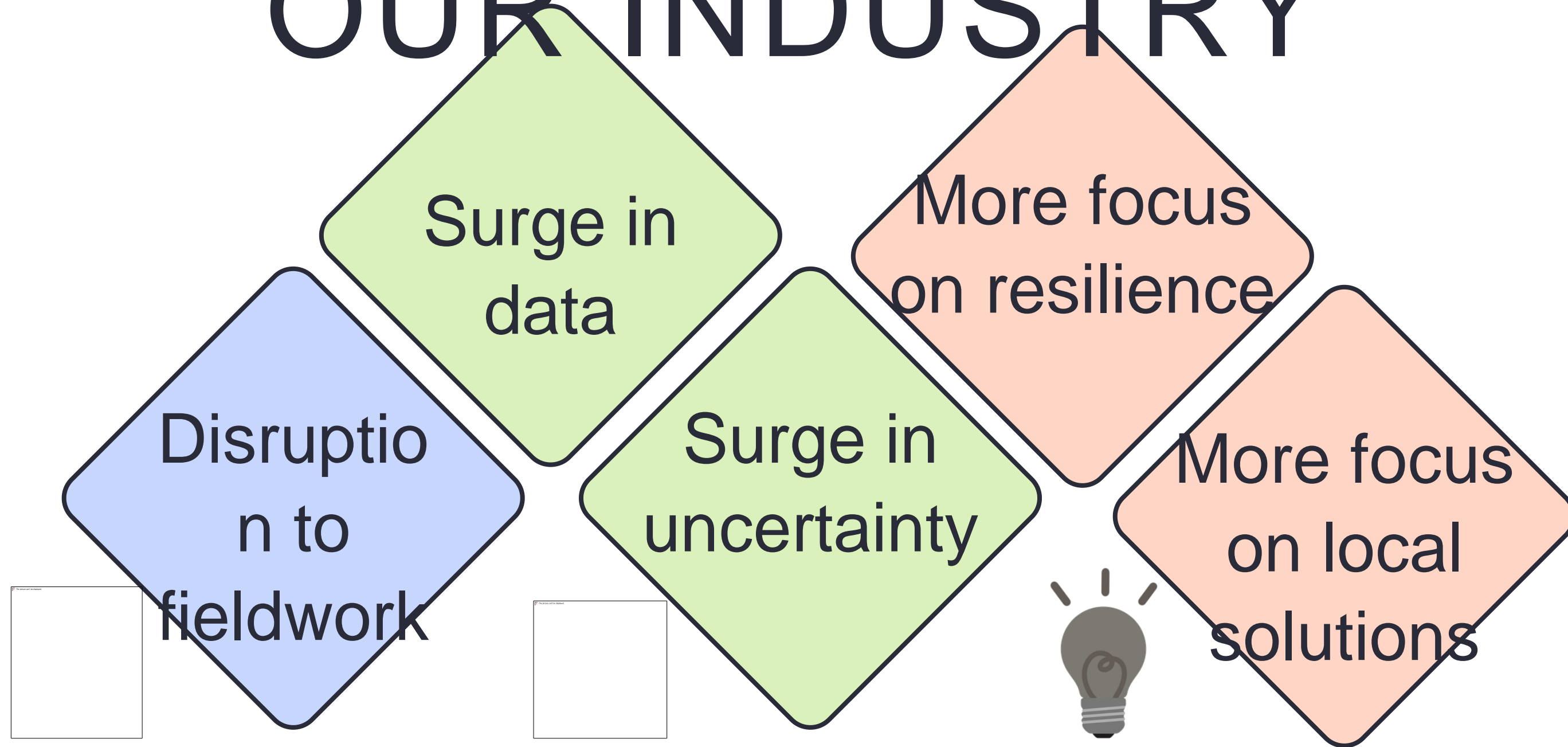


Full lockdown  
WFH & University  
online

Hybrid  
working  
normalised



# EVIDENT SHIFTS IN OUR INDUSTRY



# SHIFTS FOR EARLY CAREER PROFESSIONAL S (ECPs)

Disrupted  
career  
pathways

Emphasis on  
transferable  
skills

Mentorship  
structures

Where do we go  
from here?



# KEY MESSAGE

Decide what matters

matters

Challenge for ECPs

What we're taught

- Collect samples
- Clean up data

data

Evolution of what matters

What COVID changed

- Which data = noise?
- Which data = signal?

signal?



# KEY

## MESSAGE

Insight only matters if it's  
usable

What we're  
taught

- Data analysis
- Report writing

writing

Science  
communication

What COVID  
changed

Challenge for  
ECPs

Technical  
findings  
does not =  
actionable

outcomes

# KEY MESSAGE

Strategy turns data into

decisions

What we're taught

Focus on technical accuracy

- Interpret uncertainty
- Be comfortable with uncertainty

Challenge for ECPs

Balancing data, accuracy, uncertainty, time, budget

What COVID changed



# SUMMARY – Advice for ECPs

(feel free to take a photo of this slide)

Who will use my analysis?

Is my analysis understandable for my target audience?

What decision(s) will this inform?

**Key**

Decide what matters (noise

Insight only matters if it's usable (bigger

Strategy turns data into decisions

(balancing factors)

Learn to translate, not just analyse

Get comfortable making mistakes

Focus on output *and* impact

Stay curious about the

bigger picture

No matter what stage you

are in your career, you're

not behind

You're not expected to

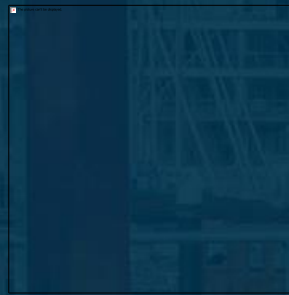
# Thank you



**Gina Harris**  
Environmental Consultant



[linkedin.com/in/-georgina-harris/](https://www.linkedin.com/in/-georgina-harris/)  
[linkedin.com/company/eriasgroup](https://www.linkedin.com/company/eriasgroup)



[georgina.harris@eriasgroup.com](mailto:georgina.harris@eriasgroup.com)  
[info@eriasgroup.com](mailto:info@eriasgroup.com)

**ERIAS**  
VALUE. INTEGRITY. RESULTS.