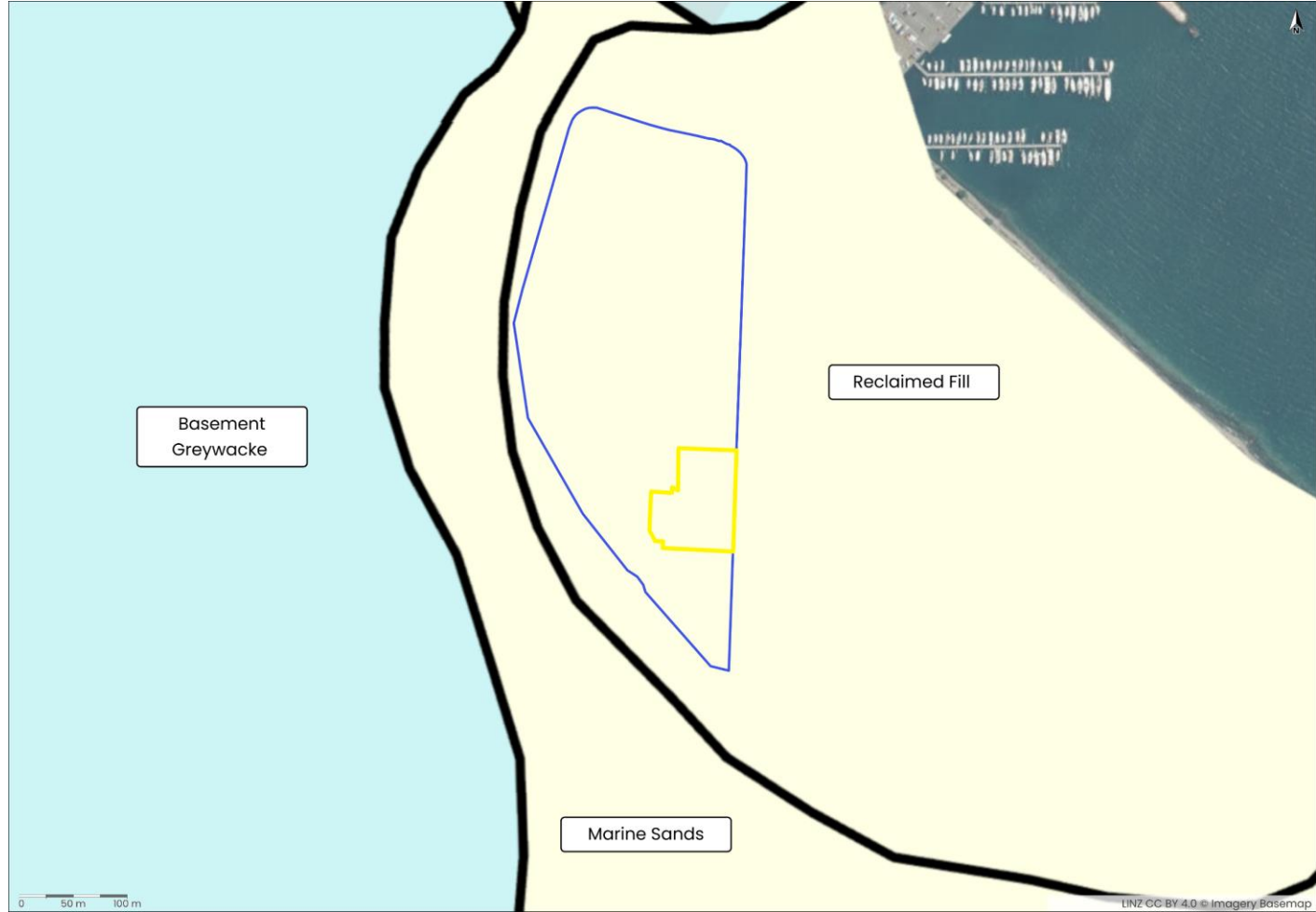


# Collaboration in Action: Engineering a Skate Park on Contaminated Ground

Michael King  
Senior Project Consultant - LQR  
SLR Consulting Ltd





Crown\_163\_175\_15

1941

0 50m 100m

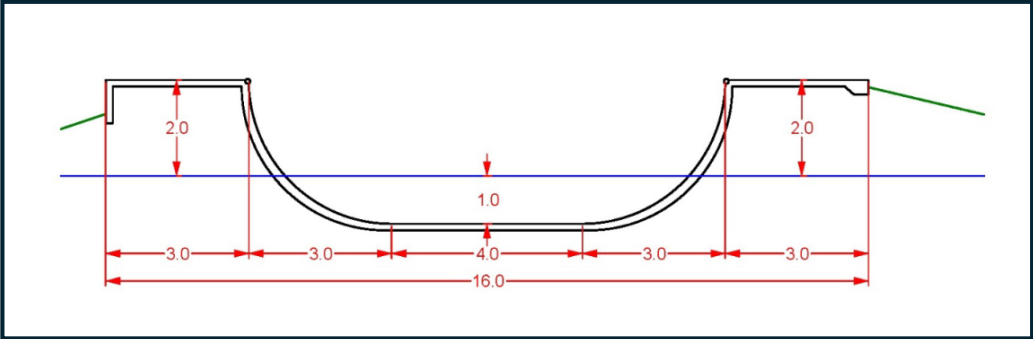
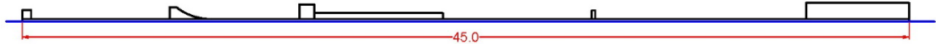
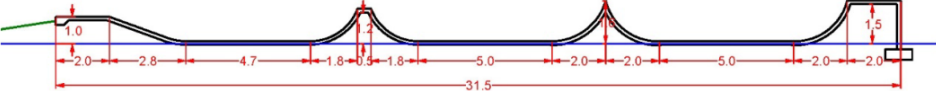
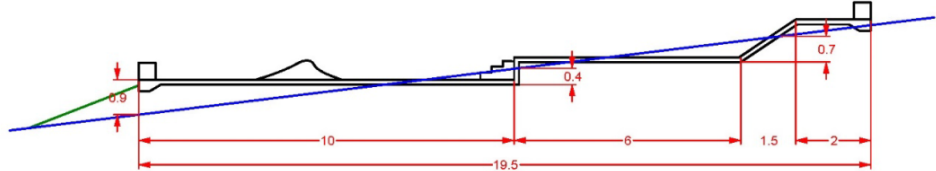
LINZ CC BY 4.0 © Imagery Basemap



Mā te mahi tahi  
Driving impact through **collaboration**



# Diagram of standard construction methodology





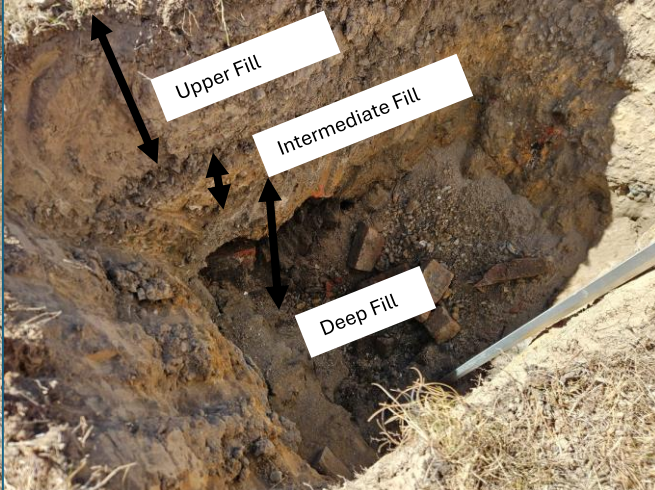
**Legend**

- 2024 CPTs
- 2025 CPTs
- 2025 Test Pits
- Project Site
- Kilbirnie Park

0 5m 10m  
LINZ CC BY 4.0 © Imagery Basemap contributors

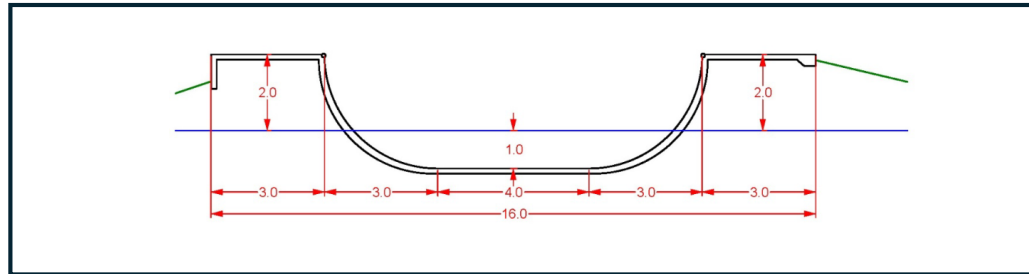
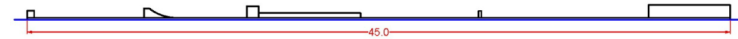
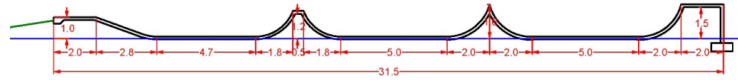
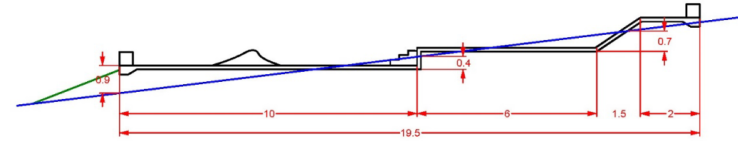
**SLR**  
Produced by **Datanest.earth**

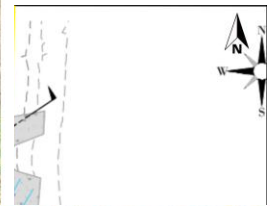
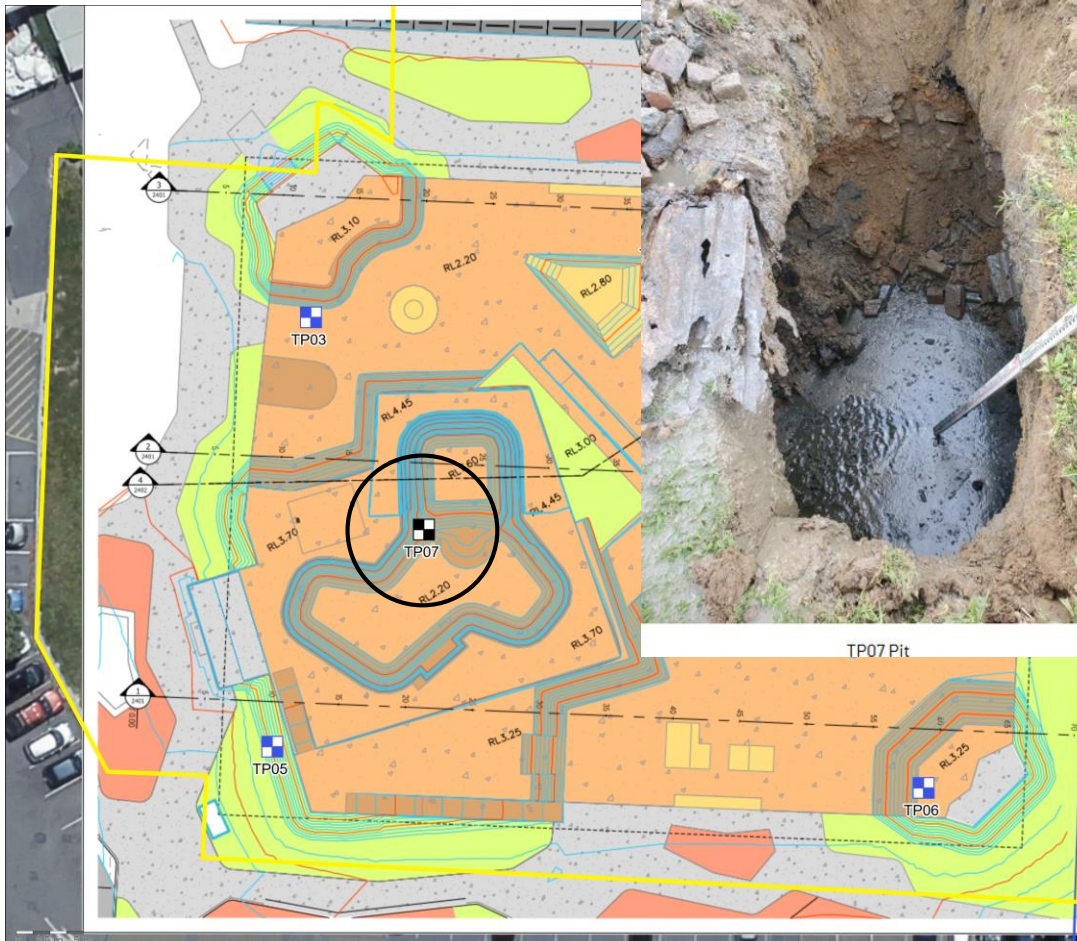
Title: Initial DSI		
Client: WasteMINZ / ALGA	Size: A3	
Project: Mā te mahi tahi   Driving impact through collaboration	Drawn: -	Figure No.: 6
Date: 25-04-2026	Checked: -	
Proj No: -	Scale: 1:400	Version: Final



# Design Discussions

Diagram of standard construction methodology





TP07 Pit

**ENVELO**  
 WWW.ENVELO.CO.NZ  
 DRAWN: JAH  
 CHECKED: —  
 SCALE: 1:25  
 STATUS: 30% ISSUE  
 PROJECT: 2246-01  
 DRAWING: 2400

LINZ CC BY 4.0 © Imagery Basemap contributors.



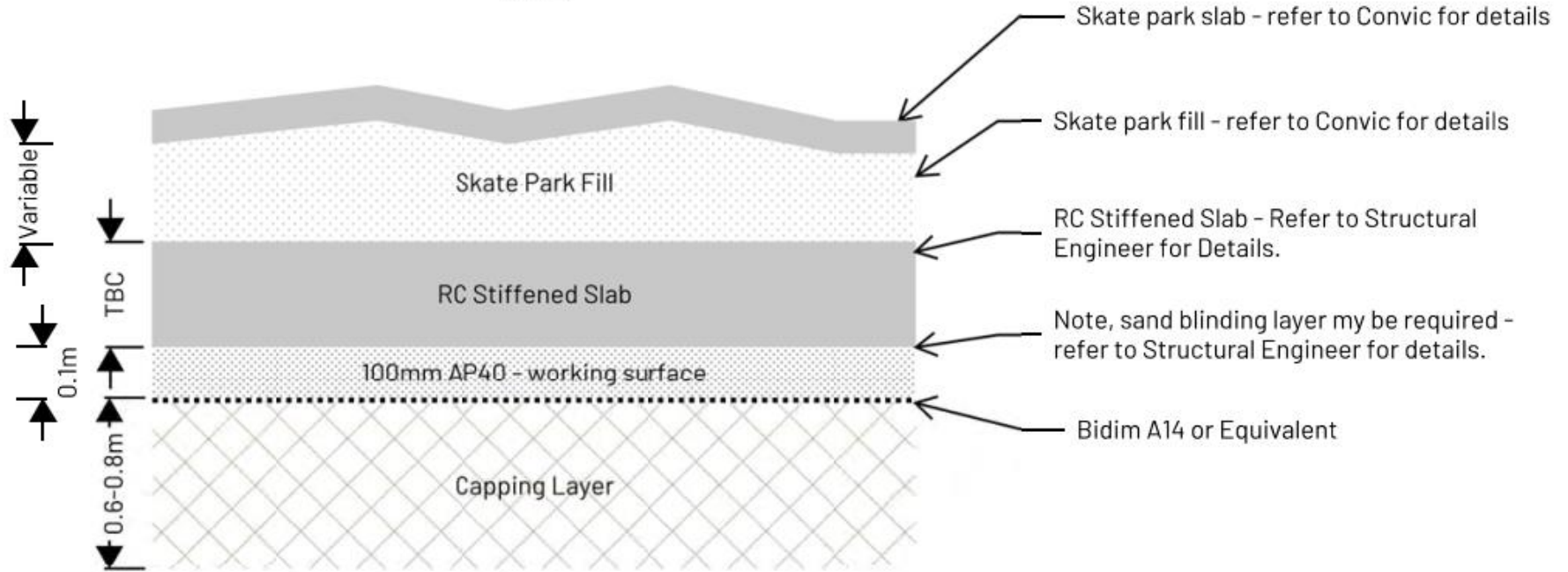
Mā te mahi tahi  
 Driving impact through collaboration



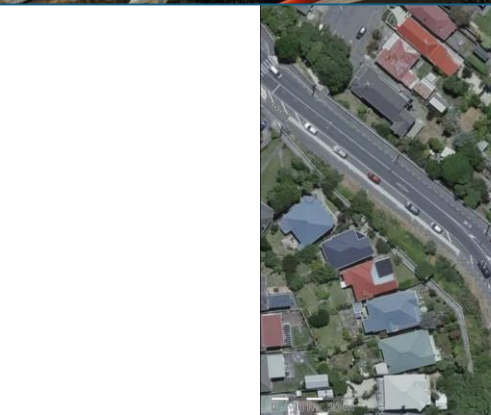
# Design Discussions

- Competing priorities!
  - Geotechnical
  - Environmental / Contamination
  - Planning
  - The Contractor
- End goal is still the same, building a Skate Park
- Not so hidden costs
  - Disposal

## Proposed Remediation NTS









Thanks to everyone involved in the project:

- Wellington City Council – Client
- Convic – Principal Designer and Project Oversight
- Torlesse – Geotechnical Engineer
- SLR – Environmental Consultant
- Envelope – Civil Engineer



Thank You

WELLINGTON