



DUNEDIN | kaunihera
CITY COUNCIL | a-rohe o
Ōtepoti

Transforming a circular waste vision into reality

Lincoln Coe
Landfill Manager
Dunedin City Council

Stephen Douglass
Market Lead - Environment
GHD



00:00

00:01:55



DUNEDIN | kaunihera
CITY COUNCIL | a-rohe o
Ōtepoti



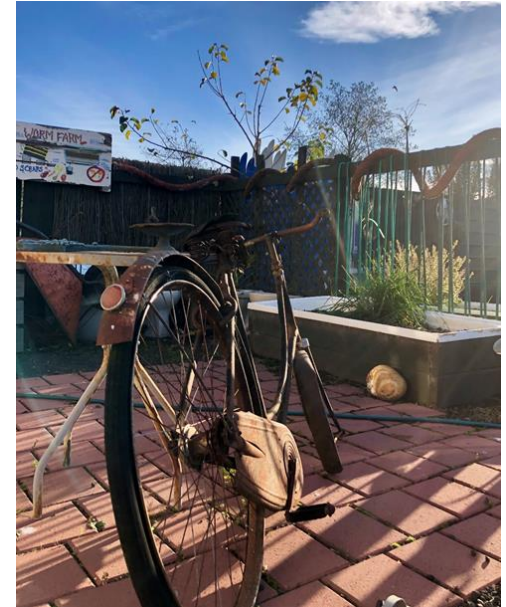
Mā te mahi tahi
Driving impact through **collaboration**

waste**MINZ**



The starting line (2017)

- Green Island Landfill consents due to expire 2023
- DCC had no plan for waste management beyond that
- Waste services 100% contracted out – DCC not actively managing its waste assets
- Residential waste collection had not changed in decades
- DCC made strategic decision to invest in its Waste Future



The Vision



Green Island Landfill site



Development of Smooth Hill Landfill



Green Island Resource Recovery Park (GIRRP) redevelopment



Recycling and rubbish collection



Green Island Landfill



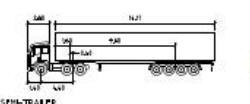


SITE DEVELOPMENT BOUNDARY	
[Red dashed line]	SITE DEVELOPMENT BOUNDARY
[Blue fill]	BUILDING
[Yellow fill]	CONCRETE PAD
[Brown fill]	FOOTPATH
[Grey fill]	ROAD / ASPHALT AREA
[Green fill]	GRASSED AREA

NOTES:
1. VEHICLE BODY SHOWN WITHOUT CLEARANCE.

LEGEND - VEHICLE TRACKING

DILDOCK ON TRAILER AND TRAILER	
Vehicle width	3.00m
Vehicle height	3.00m
Trailer length	12.00m
Trailer width	2.40m



SEMI-TRAILER	
Vehicle width	2.40m
Vehicle height	3.00m
Trailer length	12.00m
Trailer width	2.40m



TOUR COACH	
Vehicle width	2.40m
Vehicle height	3.00m
Trailer length	12.00m
Trailer width	2.40m



LARGE RIGID TRUCK	
Vehicle width	2.40m
Vehicle height	3.00m
Trailer length	12.00m
Trailer width	2.40m



B319	
Vehicle width	2.40m
Vehicle height	3.00m
Trailer length	12.00m
Trailer width	2.40m





DUNEDIN | kaunihera
CITY COUNCIL | ō-tepoti

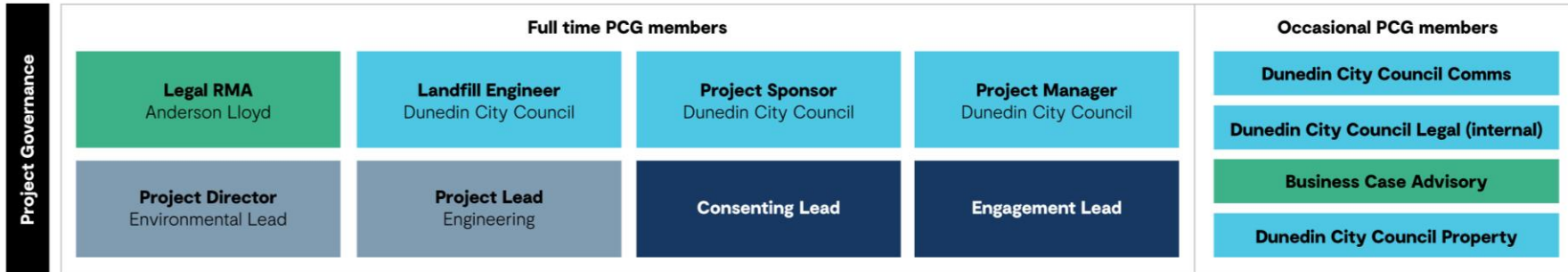


Mā te mahi tahi
Driving impact through **collaboration**

wasteMINZ  

Foundations for success

DCC WF Steering Group



Technical specialists supporting the Green Island Closure and GIRRP included:

Landfill engineering design, geotechnical and seismic assessments, landfill gas, air quality and odour, stormwater and hydrology, hydrogeology, ecology (terrestrial, freshwater and avifauna), pest management, human health risk assessment, fire risk assessment, noise and vibration, and transport impact assessment.

- Dunedin City Council
- GHD
- Boffa Miskell
- Morrison Low



Community Focused



The Future



WALDRONVILLE

GREEN ISLAND
LANDFILL CAP AT
CLOSURE

KAIKORAI STREAM /
ESTUARY

WALTON PARK

FAIRFIELD

BRIGHTON RD

BULK WASTE
TRANSFER
STATION

ORGANICS RECEPTION
BUILDING

ORGANICS
PROCESSING
BUNKERS AND
MATURATION AREA

BUND

MATERIALS
RECOVERY
FACILITY

OFFICE
FACILITIES

RUMMAGE
STORE

GLASS
BUNKERS

CLARITON AVE
HOUSING

KAIKORAI STREAM

GREEN ISLAND
INDUSTRIAL AREA

EDUCATIONAL
FACILITY

DUNEDIN SOUTHERN MOTORWAY

ABBOTS CREEK

BRIGHTON ROAD ACCESS

SUNNYVALE
PARK

SUNNYVALE

WELLINGTON

Mā te mahi tahi
Driving impact through **collaboration**

 wasteMINZ  ALGA