

Roadmap to a Big Decision - Watercare's Mangere Biosolids Servicing Project

Campbell Jensen – Strategic Programme Planning Manager -

Biosolids

WasteMINZ Conference – MAY 2026



Everything we flush doesn't disappear, it concentrates

Biosolids are the physical receipt of modern urban life.

Auckland produces ~400 tonnes of biosolids per day (\approx a jumbo jet)

Our current biosolids solution reaches capacity by 2035

Today: we will cover the process for defining the next solution



First, let's ground this: what are biosolids?



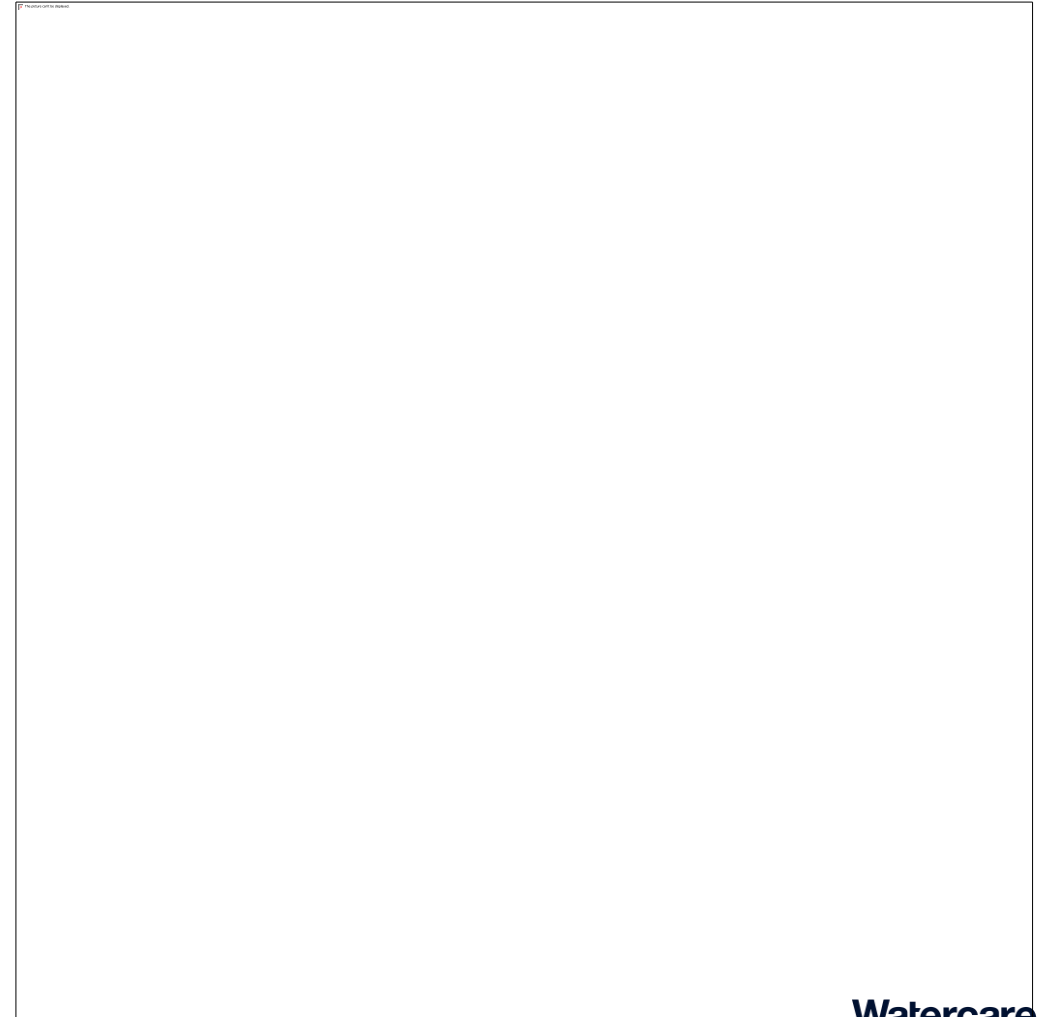
The real challenge: continuity of a critical service

- 150,000–175,000 tonnes/year from Māngere by 2035
- Current disposal at Puketutu reaches capacity from 2035
- No disposal = risk to wastewater system continuity
- This is essential infrastructure, its not optional



So what does 'good' look like? – Our North Star

- Reliable, long-term 35yr servicing capacity
- Proven at scale
- Affordable and value for money
- Achievable approvals and build understanding
- Underpinned by a robust and defensible process



We're not choosing from infinite options, we've identified two anchor solutions

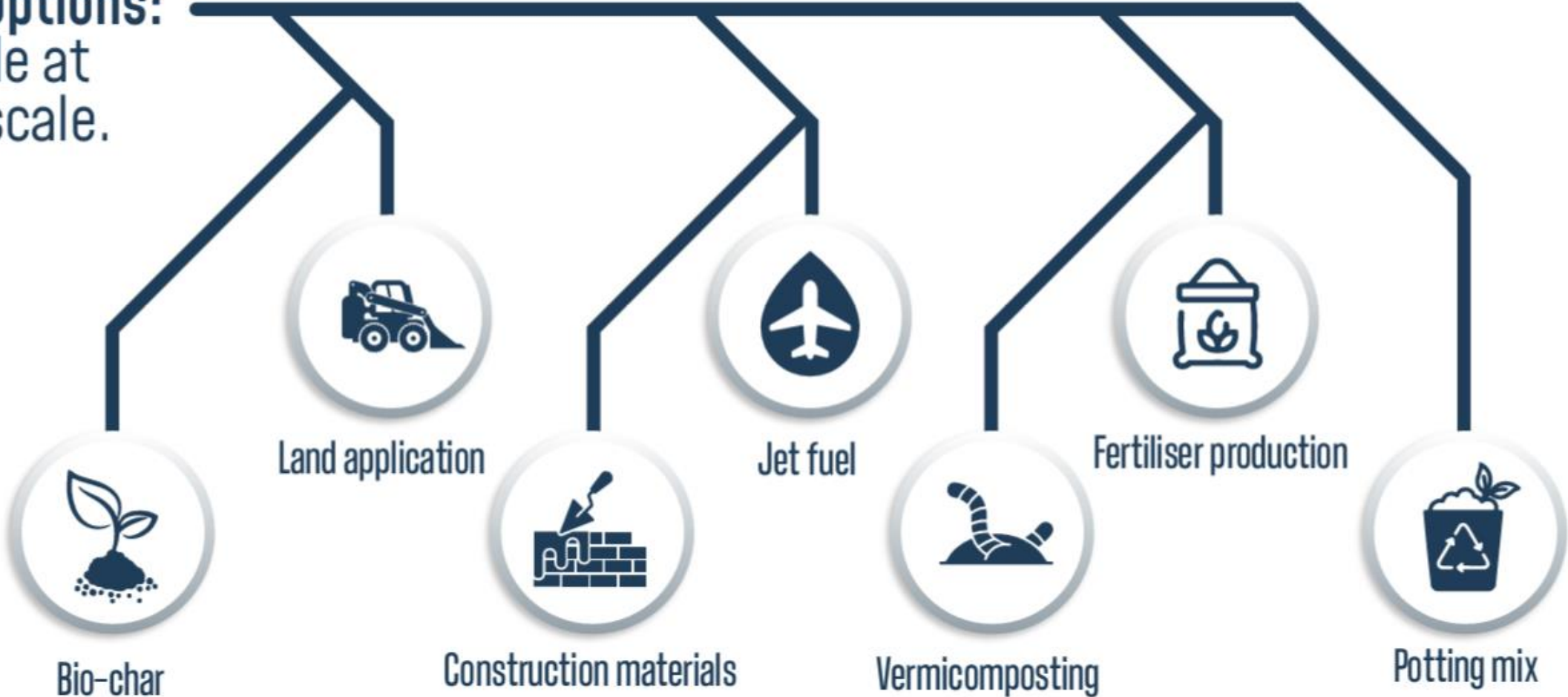
>175,000
tonnes per year

Primary solutions:
Demonstrated at
large scale.



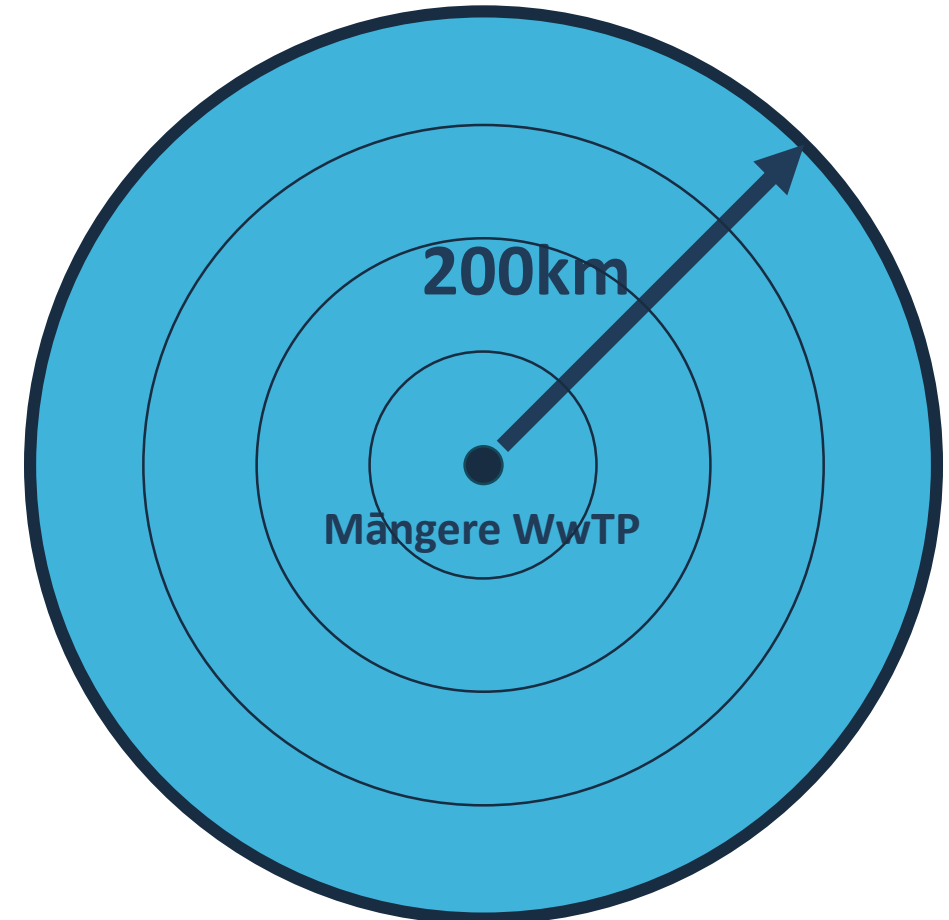
Other options that may be possible at a small scale...

Other options:
Possible at
small scale.

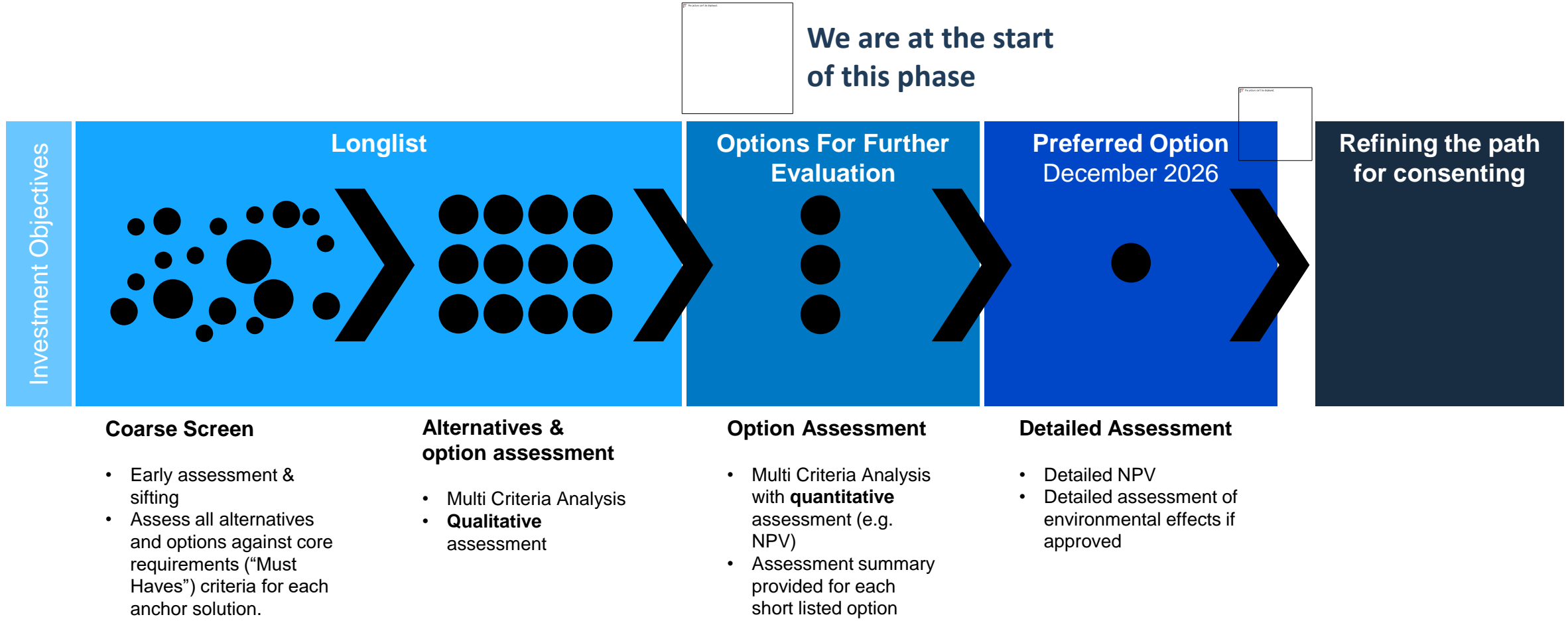


To find locations we started wide: because you don't know what you don't know

- Wide-net search across locations and combinations – a 200km radius
- Capture full opportunity set

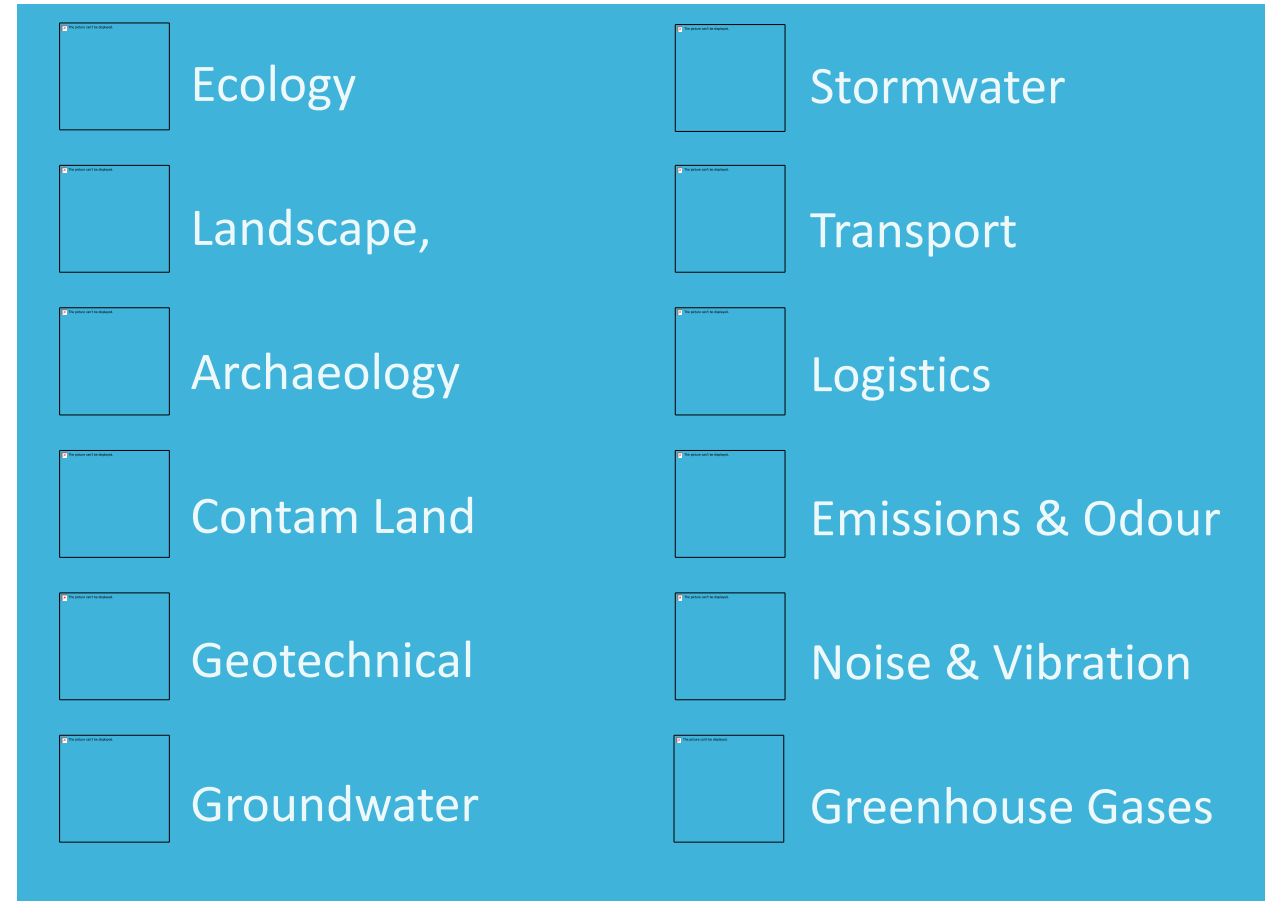


Then we narrow - but only on what actually matters and on the differences



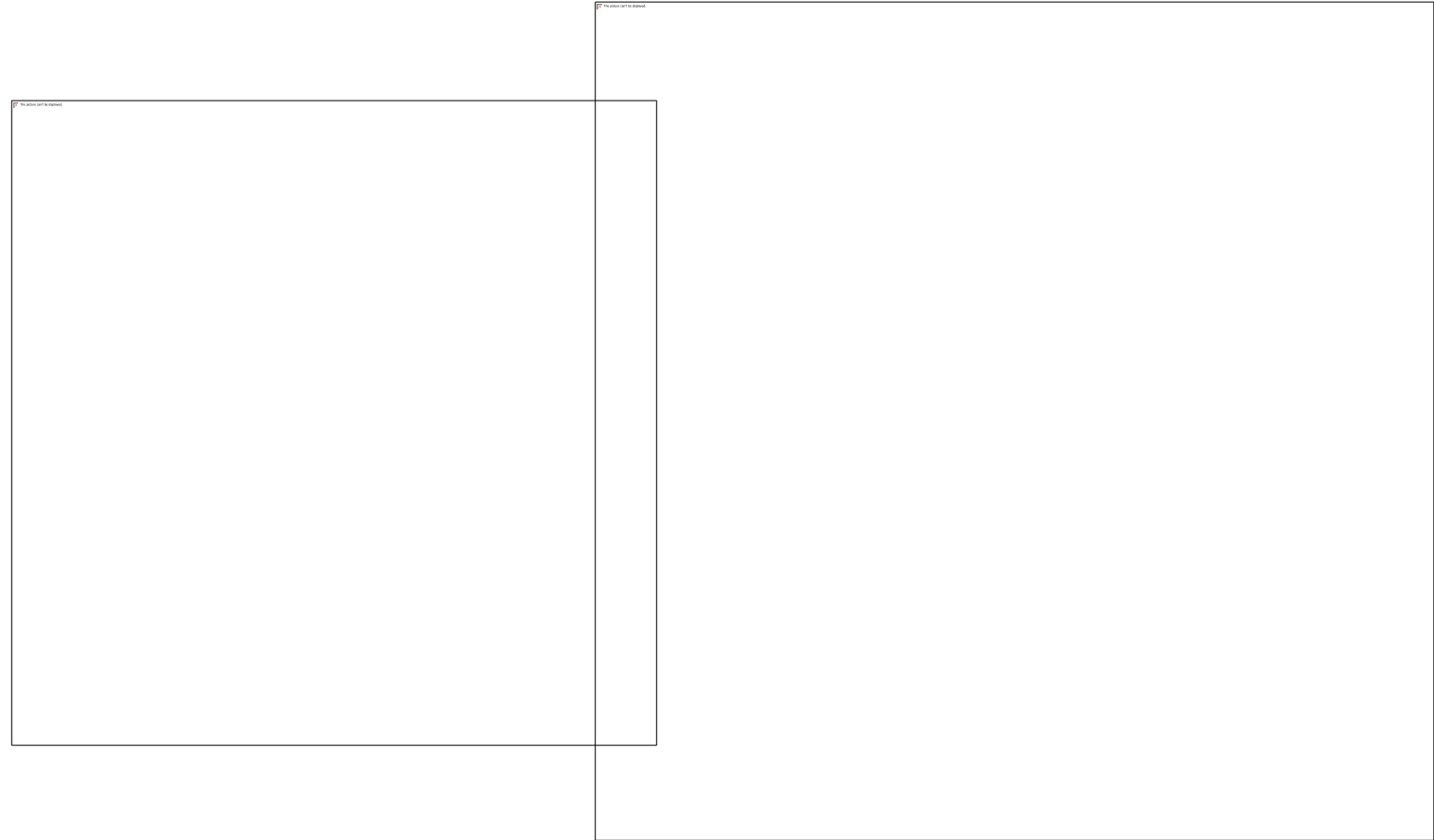
Consistency matters: we don't let assumptions vary between options

- We use the same specialists across all options, not different specialists per option
- Creates:
 - Consistent assumptions
 - Comparable scoring
 - Reduced bias



We don't 'kill' options - we progress or bench them

- Options are either:
 - Progressed, or
 - Benched
- No option is permanently discarded
- Optionality is protected throughout
- Options can return if new information emerges



Engagement is shaping the process, not following it

Mana whenua engagement is ongoing throughout the process.

Public: Awareness and education campaign will continue up to when a preferred option is identified.

Local Board: Awareness and regular updates as we progress towards an approved preferred solution.

Community consultation will commence once the consenting pathway is understood.

Our first phase of engagement to raise awareness provided valuable feedback



Leave space for beneficial reuse of biosolids



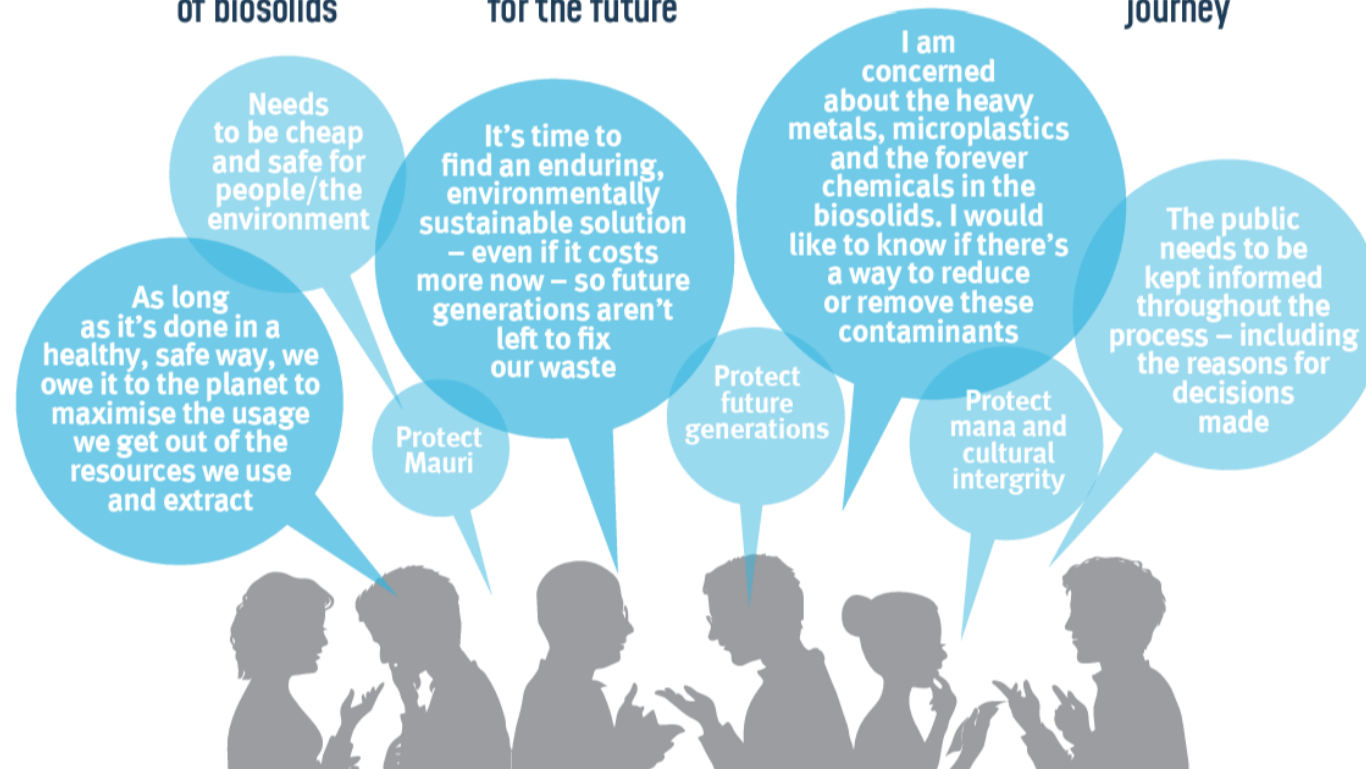
Protect the environment for the future



Be clear about contaminants



Take people on the journey



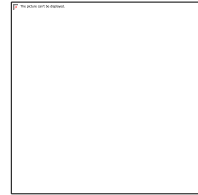
Everything we flush doesn't disappear and neither does our decisions



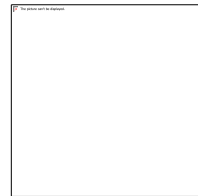
Unless it is addressed, the same is true of uncertainty and risk in decision-making



Consistency + focus on differentiators = better decisions



You need to work through the process deliberately and with curiosity



Because a robust outcome depends on a robust process

Where to from here to achieve a 2035 commissioning

