

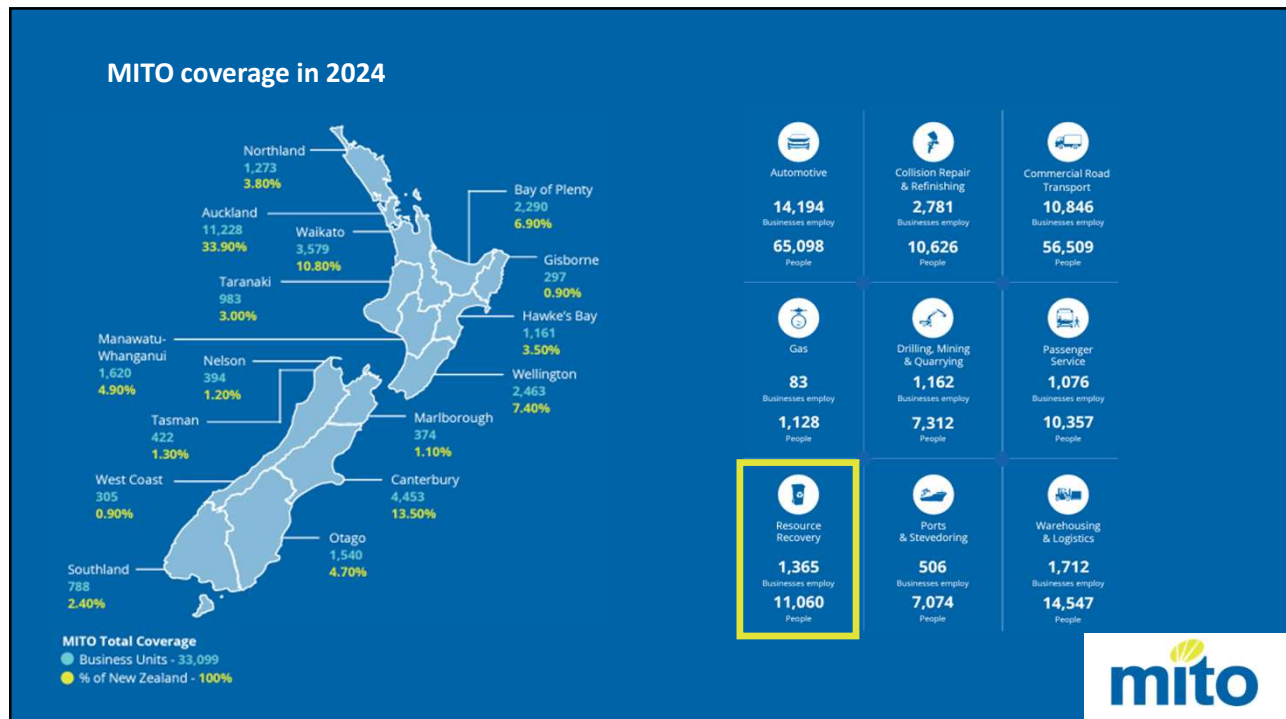


## Waste Transport Driver micro-credentials

Phil Ulrich – Manager Business Systems

30 July 2025

1



2

### MITO performance in 2024



3

### Transition to industry ownership

- All MITO's industries (and 21 associations) are united: a return to industry ownership is desired as soon as possible
- Thank you for your support
- MITO Transition Board in place
- Working towards a return to industry ownership via a one step process **on or before** 1 January 2026
- A Charitable Company structure has been established: MITO Ltd
- Industry associations will hold shares
- Approvals from Te Pūkenga, NZQA, and TEC are being sought
- Lift and shift

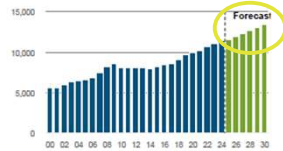


4

## Resource Recovery sector

### 11,466 filled jobs

0.4% of 2,907,834 in New Zealand



CHANGE P.A.	2019-2024	2025-2030
Resource Recovery	3.3%	3.1%
Total New Zealand	1.9%	1.5%

### 5,168 Total job openings

Total New Zealand: 944,753

Total job openings (2025-2030) consists of:

- New jobs: 1,966
- Net Replacement job openings: 3,202

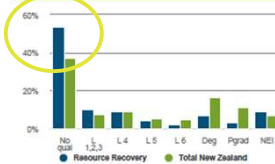
### 4,048 jobs: top 5 occupations

35.3% of total Resource Recovery in New Zealand

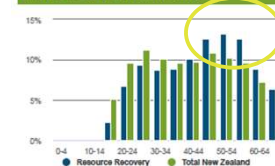
OCCUPATION	LEVEL 2024	CHANGE 19-24	CHANGE 25-30 (F)
Truck Driver (General)	1,738	3.3%	2.5%
Labourers nec	766	4.3%	3.9%
Factory Process Workers nec	580	6.7%	6.4%
Recycling or Rubbish Collector	532	1.6%	0.3%
Sales Representatives nec	433	2.1%	2.3%



### What were the workers highest (post school) quals in 2018?



### What was the age profile of workers in 2018?



## KCTL and micro-credential development

- National standard for Waste Transport Drivers
- Replacement for KCTL
- Led by industry
- eLearning (online)
- Practical assessments—assessed by a MITO-approved Workplace Assessor
- <https://www.mito.org.nz/get-qualified/our-industries/transport-and-logistics/waste/>



## Waste Transport Driver Operations and Safety (micro-credential)

(Level 3, 13 Credits)

 Theory assessment  Practical assessment

### Courses

Demonstrate knowledge of working safely in the vehicle working space while undertaking waste industry activities

US 33257



### Electives (Choose one of the following to complete)

Operate a front-end loader vehicle for transportation of waste	US 17189	✓
Operate a gantry vehicle for transportation of waste	US 17190	✓
Operate a hookload vehicle for transportation of waste	US 17191	✓
Operate a rearload vehicle for transportation of waste	US 17193	✓



 mito

7

## Waste Transport Driver Operations and Safety Using a Left-hand Waste Collection Vehicle (micro-credential)

(Level 3, 18 Credits)

 Theory assessment  Practical assessment

### Courses

Demonstrate knowledge of working safely in the vehicle working space while undertaking waste industry activities

US 33257



### Electives (Choose one of the following to complete)

Operate a sideloader vehicle for transportation of waste	US 17194	✓
Operate a low-entry vehicle for transportation of waste	US 17192	✓



 mito

8

### Waste Transport Driver delivery and next steps

- In the workplace
- Utilise downtime or schedule time to do the eLearning
- Workplace Assessor application
- Training fee = \$77 + GST/micro
- Enrol some learners through the MITO Employer Portal or
- <https://www.mito.org.nz/get-qualified/our-industries/transport-and-logistics/waste/> or
- Phone MITO 0800 88 21 21



9

### Opportunities in 2026

- In 2026, MITO will be an even more agile organisation with a continued focus on workforce development for the industries it serves.
- The opportunity is there for the Resource Recovery sector to further engage in work-based training with MITO.
- All we need is the demand.
- Implement pathways of formal micro-credentials and qualifications to upskill your employees, improve staff retention, increase productivity, and develop the next generation of managers and leaders.



10



# PICK UP SOME **NEW SKILLS**

With MITO's new Waste Transport Driver micro-credentials.  
**Now available for enrolment!**

To find out more, visit [mito.nz/waste](https://mito.nz/waste)

