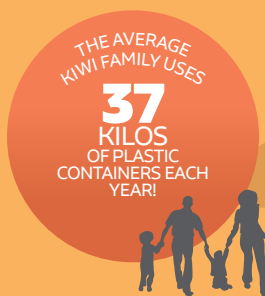


HOW MUCH LANDFILL IS IN YOUR SHOPPING TROLLEY?

THE TRUTH ABOUT RECYCLING PLASTIC CONTAINERS

HOW MUCH PLASTIC DO WE USE IN NZ?



WHY?
181 MILLION
 CONTAINERS SHOW NO PLASTIC ID CODE OR RECYCLING INFORMATION

WHAT'S THE MOST COMMON PLASTIC IN NZ?

THE MOST COMMON ITEM IS THE SINGLE-USE PLASTIC DRINK BOTTLE



WHAT DO THE NUMBERS MEAN?

THE NUMBERS STAMPED ONTO PLASTIC PACKAGING ARE 'PLASTIC ID CODES'. THEY TELL US THE PLASTIC TYPE, BUT THAT DOESN'T ALWAYS MEAN IT CAN CURRENTLY BE RECYCLED.

MOST RECYCLABLE PLASTICS

31 KGS OF THE PLASTIC CONTAINERS IN OUR SHOPPING TROLLEYS ARE NUMBERED



THESE PLASTICS CAN BE RECYCLED WELL AND GO INTO USEFUL NEW ITEMS LIKE



LEAST RECYCLABLE PLASTICS

ARE CHALLENGING TO RECYCLE ANYWHERE IN THE WORLD, AND OFTEN END UP AS WASTE. A TYPICAL KIWI FAMILY HAS ABOUT

89

PIECES OF THESE PLASTICS IN THEIR TROLLEYS EACH YEAR.

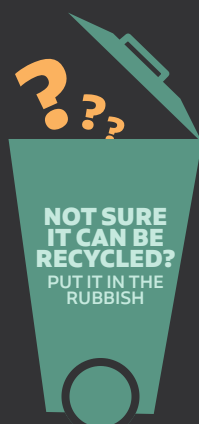


WHAT CAN YOU DO?

LOOK FOR UNPACKAGED ITEMS OR ITEMS IN NON-PLASTIC PACKAGING

BUY IN BULK SO YOU USE FEWER CONTAINERS

CHECK WITH YOUR COUNCIL WHICH PLASTICS THEY ACCEPT FOR RECYCLING



LEARN HOW TO REDUCE YOUR USE OF PLASTIC AT PLASTICFREEJULY.ORG